

MAY 2010

MARY KAY®
Enriching Women's Lives™

Applause®

earn this
fabulous bag

Team-Building
Can Lead to
Stylish Rewards

New Gifts for
Mother's Day



PROJECT
superStar

Plan Now for **Seminar 2010**

free* for you April 16 – May 15, 2010

This month, your free* items with your qualifying order will include Mary Kay® SPF 30 Sunscreen†, Mary Kay® Lip Protector Sunscreen SPF 15†, the MK High Intensity™ Gift Bag, MKMen® Gift Bag with tissue and the Travel Roll-Up Bag. For a complete list of BizBuilders quantities and values for this month, go to the Mary Kay InTouch® Web site after April 10 and type "BizBuilders" in the search bar.



Mary Kay®
SPF 30 Sunscreen†



Mary Kay® Lip Protector
Sunscreen SPF 15†



MK High Intensity™
Gift Bag



MKMen® Gift Bag
With Tissue



Travel Roll-Up Bag
(Product not included.)

wholesale order	receive for free*
\$400	\$21⁵⁰ in suggested retail products
\$600	\$21⁵⁰ in suggested retail products + Section 2 items
\$800	\$73 in suggested retail products + Section 2 items
\$1,200	\$124⁵⁰ in suggested retail products + Section 2 items
\$1,800	\$176 in suggested retail products + Section 2 items
Star Consultant	



Mary Kay said it best

"Sometimes I wonder if my mother was aware of the seeds she was planting in my life as a child ... and where they would take not only me, but thousands of other women. What she sent into my life I sent into others'. And they in turn have sent what they have into many lives as well. The seeds planted in 1963 have flourished and been nourished by thousands of women. Those who went beyond the bounds of what their peers expected, what their families expected or even what they expected themselves."

may: dates to remember

1 Postmark cutoff for Independent Beauty Consultants to mail Commitment Forms to begin Independent Sales Director qualification this month.
Seminar 2010 registration opens to everyone.

Online Sales Director-in-Qualification Commitment Form available beginning 6 a.m. Central time. **8**

9 Mother's Day. Show Mom you care with new limited-edition Mother's Day Gift Sets.

Last day to submit online Sales Director-in-Qualification Commitment Form. Commitment Form available until midnight Central time. **10**

12 Mary Kay's birthday



Postmark deadline to earn the second monthly product bonus. **15**

Last day to enroll online for the Summer 2010 Preferred Customer ProgramSM mailing of *The Look*, including exclusive samplers, while supplies last.

16 Third monthly product bonus begins.

April Career Car qualifier paperwork due to Company. **20**

27 Last day of the month for Independent Beauty Consultants to place telephone orders (until 10 p.m. Central time).

Last business day of the month. Orders and Independent Beauty Consultant Agreements submitted by mail or dropped off at the branches must be received by 7 p.m. local time to count toward this month's production. **28**

30 Last day of the month for Independent Beauty Consultants to place online orders (until midnight Central time).

Memorial Day. All Company and branch offices closed. Postal holiday. **31**

Online Independent Beauty Consultant Agreements accepted until midnight Central time.

Take Note

- Beginning March 16, Telephone Ordering hours changed to 8:30 a.m. to 10 p.m. Central time (formerly 7:30 a.m. to midnight). Also, the \$3.50 fee per telephone order increased to \$5 per order.
- Online Independent Beauty Consultant Agreements are accepted until midnight Central time (extended from 7 p.m.) at month-end.

For more information, visit the Mary Kay InTouch® Web site.

*Sales tax is required on the suggested retail value of Section 1 products.

†Over-the-counter drug product

make moms feel special



Celebrate the beauty of motherhood on May 9!

Moms of all kinds are sure to love the new limited-edition Mother's Day Gift Sets available beginning April 1. And with the Fragrance-Free Satin Hands® Pampering Set as an option, she'll be all set with soft hands. Look for a special Customer Delivery Service offer available to everyone that can help deliver these gifts on time. Details are online! What's more, spring parties can help you share the Mary Kay opportunity, meaning May could be your month to put team-building *in the bag*!

Page 2

Promoting Value

Value comes in many forms, including Mary Kay® products and the personalized services you offer. Make sure your customers see the value!



It's in the Bag!

Team-building tools and tips provide professional support as you reach for the *It's in the Bag!* Team-Building Challenge by June 30.

Page 15



Seminar 2010

Is the Party of the Year!

Seminar is the year-end celebration to mark your accomplishments and discover what you need to make 2011 even better. Targeted education gives you practical knowledge, while fun and motivation keep you pumped up. Don't miss it!

Page 16



how you can talk about value!

When Mary Kay was the only beauty brand to place in the top 10 in Brand Keys Customer Loyalty Leaders 2009 list, the Brand Keys press release noted, “The ‘emotional engagement’ that women share with their favorite beauty brands is still very powerful.” (Let’s face it — women just love feeling beautiful!)

Marketing experts agree that what makes consumers loyal today is a combination of quality and value. As the Brand Keys press release further explains, “The old ‘price-value’ equation has been transformed to an instantaneous ‘value-for-dollar’ consumer calculation.” Translation: Your customer still wants to feel beautiful, and she also wants to feel smart by making a savvy purchase. Best of all for you as a Mary Kay Independent Beauty Consultant, she’s loyal to brands that make her feel that way!

So how can you help your customers make that “instantaneous calculation” of value? By focusing on Mary Kay® products that offer multiple benefits in a single item, or that provide a luxurious spa experience at home or give great results that cost just \$10 or less.

There’s more! When you share this value story with customers, you also can mention that the April issues of *Cosmo en Español*; *Good Housekeeping*; *Essence*; *Marie Claire*; *O, The Oprah Magazine*; and *Redbook* include stories on the value of Mary Kay® products too! For more information and downloadable fliers of those magazine stories, visit the Mary Kay InTouch® Web site.

Many benefits, one product:

TimeWise Body™ Targeted-Action® Toning Lotion \$28

TimeWise Body™ Targeted-Action® Toning Lotion combines the benefits of multiple products in one body-loving formula, energized by a double shot of caffeine, the power of pumpkin and a totally invigorating scent. And there are lots of other goodies and ingredients chosen for their ability to deliver results.

After 4 weeks,
3 out of 4 women said* their skin looked toned.
Plus, they saw* these other visible changes:

After 2 weeks,
94% said their skin appeared smoother.

After 4 weeks,
81% said their skin looked firmer.

After 8 weeks,
68% said body contours appear firmed.

Take the
fight against
aging beyond
your face.



TimeWise Body™ Hand and Décolleté Cream Sunscreen SPF 15† \$18

No matter how well a woman’s face conceals her age, her hands and décolleté usually give it away. But not anymore. TimeWise Body™ Hand and Décolleté Cream Sunscreen SPF 15† delivers.

- **After 2 weeks:** 80% said it softens the appearance of crepiness.*
- **After 4 weeks:** 78% said it helped reduce the appearance of fine lines.*
- **After 8 weeks:** 60% said it helped reduce the appearance of dark spots.*



Do It Yourself:

TimeWise® Replenishing Serum+C

*Give collagen a boost.** Help skin bounce back.***

\$55

A month's worth of great skin could cost less than one trip to a spa! With TimeWise® Replenishing Serum+C, skin will appear lifted and firmed. This antioxidant-rich serum is formulated with ingredients that enhance the production of new collagen and help keep existing collagen from breaking down. The formula is enriched with a potent blend of multiple botanical sources known for their high levels of vitamin C.



TimeWise® Microdermabrasion Set

\$55

Here's a way for customers to get immediate results – without an appointment! This two-step system starts with an advanced exfoliator and follows up with a nourishing serum to fight fine lines, refine pores and deliver beautifully smooth skin – immediately.

Great Buys at \$10:

Fragrance-Free Satin Hands® Hand Cream

\$10

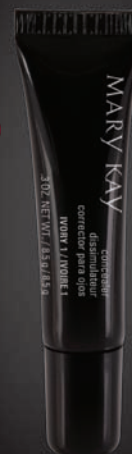
This rich hand cream leaves hands soft and silky and moisturizes for 24 hours. It even lasts through several hand washings.



Mary Kay® Concealer

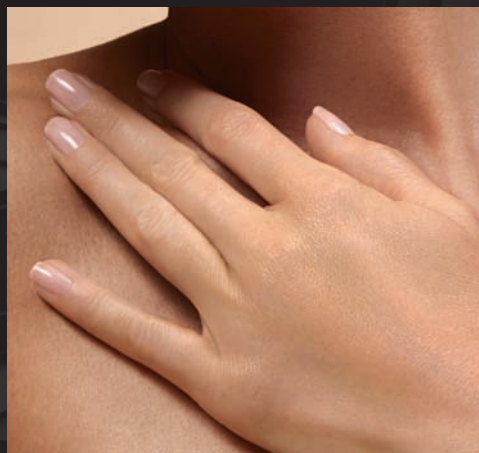
\$10

Long-lasting, creamy concealer covers minor imperfections in seven easy-to-match shades. Last year, *O, The Oprah Magazine* included Mary Kay® Concealer in its Makeup O-wards.



hand helpers

“Although the palms of the hands can withstand a lot of use, the skin on the back of hands is relatively thin and fragile just like the skin around the eyes, making it susceptible to early signs of aging,” shares Mary Kay Chief Scientific Officer **Dr. Beth Lange**. To the rescue come two Mary Kay® solutions that offer multiple benefits at a great value – hands down!



Set for Softness

Rough, dry hands are instantly cleansed, softened and moisturized in three easy steps with the Fragrance-Free Satin-Hands® Pampering Set. The set includes Fragrance-Free Satin Hands® Hand Softener to replenish dry areas, Fragrance-Free Satin Hands® Satin Smoothie® Hand Scrub to cleanse and exfoliate, and Fragrance-Free Satin Hands® Hand Cream for 24-hour moisturization.

\$34
per set

Defying Age

No matter how well a woman's face conceals her age, her hands and décolleté usually give it away. But not anymore. TimeWise Body™ Hand and Décolleté Cream Sunscreen SPF 15† delivers impressive benefits:

Here's what women who tested and tried the product said*:

- **After 2 weeks: 80%** said it softens the appearance of crepiness.
- **After 4 weeks: 78%** said it helped reduce the appearance of fine lines.
- **After 8 weeks: 60%** said it helped reduce the appearance of dark spots.



\$18



*Results reported during an eight-week independent consumer study

†Over-the-counter drug product
Product prices are suggested retail.



fragrance sets mom will love

Available April 1!

Show Mom how much you care with new limited-edition Mother's Day Gift Sets created exclusively for Mom just in time for Mother's Day! Available in three favorite fragrances, Bella Bellara®, Belara® and Journey®, each set includes a scented shower gel, scented body lotion and eau de parfum spray with a coordinating bag.

The perfect sets to warm Mom's heart!

\$55,
while supplies
last



Set for Soft Hands

The Fragrance-Free Satin Hands® Pampering Set makes another great gift for Mom! And don't miss out on a special Customer Delivery Service offer available to everyone that can help you deliver these gifts on time. Go online for details.*

*Visit the Mary Kay InTouch® Web site for complete information on this limited-time offer.

\$34
per set

Party Tips

- With numerous gift-giving occasions this time of year, why not consider holding parties or open houses that feature products made for giving? Your customers are sure to discover the perfect gifts for Mother's Day, Father's Day, graduations, weddings and more.
- A *Mom and Me* party is another great idea for spring! Look for a new Beaute-vite® that promotes how fun and special this mother/daughter party can be. Get hostesses excited by giving them party options such as skin care, spring trends, fragrances or spa – all perfect for a special mother/daughter experience!





for love of Tasha — partying with a special purpose

Today is Sunday, June 14, 2009.

I feel the need to document this journey. So much can be forgotten when we live such busy, "purposed" lives. It all began a couple of weeks ago. It seems like another lifetime now, so much has happened since. This may be important to someone else someday. What did Mary Kay Ash always tell me, every time I started to thank her for what this opportunity has done for me and my family? She would look me in the eye and say, "Trisha, just pass it on." What a privilege it is to just "pass it on." Our family has been through a lot. God will continue to strengthen us ...

So began a mother's reflection on her daughter's road back to health, a journey marked by good doctors bearing bad news, and a months-long vigil before good news swept over them again like a cleansing wave. Last year, **Independent Executive Senior Sales Director Trisha Taylor** and her husband, Carlos, stood with their 27-year-old daughter, Tasha, against cancer requiring 12 rounds of chemotherapy treatments. The family was strengthened by its faith and tempered by new life lessons. As Trisha shuttled Tasha back and forth to the hospital, held her daughter's hand through uncertain hours and victoriously overcame her own comfort level, the two shared intense moments of even deeper mother-child bonding. Throughout, Mary Kay women never stopped offering their love and support, uniting to help Trisha realize her passionate desire to achieve the Top Sales Director Trip. Today, Tasha has joined the ranks of cancer survivors, and her mom is fervent about a renewed revelation: *"The Mary Kay sisterhood and opportunity are like no other, so if you've ever thought about moving on, take a second look at your Starter Kit and hang on for the ride of your life."*

June 1: *This afternoon, Carlos told me that our Tasha was "coming by" and had something she wanted to "talk to us about." As a mom, those words immediately SEND SIGNALS. I remind myself that my faith is in God's perfect will, whatever's going on. Little did I know how much we would need His plan to see us through. Tears filled our eyes when we learned our lovely daughter had Hodgkin's lymphoma ...*

For the next two weeks, Trisha tried to maintain as normal a daily life as possible. Her weekly Mary Kay unit meetings, Carlos' travel schedule and the family's community responsibilities all continued. But lurking below the surface was a potential nightmare almost as scary as Tasha's diagnosis itself. Like many others, Tasha was uninsured.

June 15: *Tasha and I leave tomorrow for a 9 a.m. appointment at M.D. Anderson Hospital in Houston. We're not sure how long we'll be there. I'm typing this on our alternate computer because MY PERSONAL COMPUTER CRASHED today, just before Mary Kay year-end. We're focused on the Top Sales Director Trip to Italy. If I qualify, it will be the first time to take Carlos to Rome. We've had other Top Sales Director Trips, but I want SO MUCH TO SHARE that romantic city with him! I feel passionate about my goal. And now this crash! OK, suck it up, Trisha. Keep moving. Face another day. Remember how supportive your Mary Kay family is and has been. They keep asking, "WHAT CAN WE DO?" And they don't stop there. THEY CHECK BACK, over and over, attempting to help in any way at all ...*

Tricia's heart is still touched when she remembers those days. "I'm truly blessed to be part of the **Independent Senior National Sales Director Kathy Helou Area**." Her eyes moisten as she relates examples of the phone calls and personal cards. While Mary Kay sisters were helping Trisha meet her Seminar goals, her assistants were pulling out all the stops to help Tasha find insurance coverage. When M.D. Anderson waived all treatment costs, Trisha called the developments nothing short of a miracle. Gradually, glimmers of light were beginning to appear at the end of the dark tunnel.

June 30: *MARY KAY YEAR-END! I'm so thankful for willing women ready to do whatever it takes. A NEW PURPOSE is emerging: Tasha's battle with this horrible disease has tendered so many hearts, and people are increasingly willing to see our challenge through. Our unit rallied to the FINISH-STRONG line! They showed the world they're a TOP UNIT ...*

So much for the celebration. Just learned that my computer's contents are gone for good. Now I'm overwhelmed again. I'm going into my quiet space in "tearful prayers." Tech support is coming later to restore my BlackBerry® data, since my computer wasn't backed up. A hard lesson. Always back up ...

July 1: *The Italy trip is REALITY, thanks to our awesome unit! We finished with over \$656,000 – not just the required \$650,000 – by 6 p.m., beating the midnight deadline. Our "local" unit members came over to celebrate. We called Kathy Helou on the speakerphone, all of us crowding around the kitchen table, laughing, high-fiving and dancing because we accomplished so much as a TEAM. A month ago, when tests showed Tasha's cancer was Stage 4, we adopted the party rallying cry: "LET'S DO IT FOR TASHA!" The "purpose" grows all the sweeter ...*

July 3: *Tasha and I got home late tonight totally exhausted. Concerns of the UNKNOWN, plus hospital walls, can do a number on anyone. Tasha just wants to sleep. Thank God the antinausea meds are working ...*

July 7: *Tasha is rebounding, and I've been freaking out! I was told I had to LEARN FAST how to do a WEEKLY STERILE DRESSING CHANGE. I had less than 24 hours to learn this lifesaving technique and be tested. I PASSED! It felt more awesome than earning the use of my first Career Car!*

In August, Trisha attended Kathy Helou's Winner's Weekend and added a new dimension to her new purpose: "Complete 30 faces every month," then donate five percent of her yearly sales to The Mary Kay Foundation. "We've been faithful, and we're committed to continuing," she says proudly. "I told a friend who's beating breast cancer about my 'Purposed Party Plan,' and she asked several friends to 'Do It for Tasha!' Her Mary Kay® party was successful in both sales and bookings. People are inspired by something bigger than themselves."

Trisha says her recent experiences have taught her new lessons in the value of the Starter Kit she bought when Tasha was 5 years old. "Back then, I just wanted something part time so I could be with my three children more. What I've learned is that this opportunity lets you keep recalibrating your business with your personal life. As we grow, our passions and purposes grow, too, if we let them. To anyone who's thought of giving up her Mary Kay business, I ask you to think again. You just might miss a 'purpose' that would enrich your life forever!"

recognition

Congratulations to the winners for January 2010

On-Target Inner/Diamond Circle

Independent National Sales Directors become members of the prestigious Diamond Circle when they earn \$200,000 or more and a member of the exclusive Inner Circle when they earn \$325,000 or more in "NSD commissions" during the Seminar contest period. (NSD commissions are comprised of commissions earned on the wholesale production of first-, second-, and third-line offspring units; Top 10 fourth-line and beyond; Elite Executive NSD commissions; NSD commissions on personal units; NSD bonuses for NSD offspring and offspring from personal units for January 2010, NSD bonuses for Star Consultants and NSD commissions earned on all foreign countries for December 2009.) These "NSD commissions" are used to determine NSD ranking for a Seminar year. Congratulations to the following NSDs who are considered on-target from July 1 through Jan. 31, 2010.

Sapphire



Karen Piro

Emerald



Gloria Mayfield Banks

Pearl



Jan Harris

Diamond



Barbara Sunden

Ruby



Carol Anton

On-Target for \$750,000 Inner Circle

Barbara Sunden.....\$582,939.53

On-Target for \$500,000 Inner Circle

Carol Anton.....\$315,942.76
Karen Piro.....310,511.73
Gloria Mayfield Banks.....298,494.09

On-Target for \$325,000 Inner Circle

Lisa Madson.....\$268,555.88

Jan Harris.....245,167.12
Anita Mallory Garrett-Roe.....236,428.52
Pat Danforth.....235,892.70
Darlene Berggren.....233,718.56
Kathy Helou.....231,779.08
Cheryl Warfield.....226,182.62
Jana Cox.....217,820.71
Karlee Isenhardt.....215,709.88
Gloria Castaño.....214,478.69
Sue Kirkpatrick.....191,186.44

On-Target for \$250,000 Diamond Circle

Stacy James.....\$188,870.48
Lupita Ceballos.....188,386.82
Sherry Giancristoforo.....187,082.74
Cindy Williams.....184,490.10
Patricia Rodriguez-Turker.....173,774.95
SuzAnne Brothers.....169,045.63
Linda Toupin.....165,630.41
Judie McCoy.....165,131.61
Debi Moore.....164,012.77

Halina Rygiel.....162,228.89
Sonia Páez.....155,975.74
Mary Diem.....149,565.00
Dacia Wiegandt.....147,718.22
Julianne Nagle.....146,120.75

On-Target for \$200,000 Diamond Circle

Kerry Buskirk.....\$141,432.45
Shirley Oppenheimer.....139,892.45
Pamela Waldrop Shaw.....139,024.65

Ronnie D'Esposito Klein.....138,883.27
Jackie Swank.....137,468.29
Wanda Dalby.....136,490.27
Shannon Andrews.....135,961.45
Diane Underwood.....130,968.26
Lily Orellana.....126,016.88
Jamie Cruse-Vrinos.....123,595.85
Jeanne Rowland.....117,851.56

Monthly Commissions and Bonuses

Listed are NSD commissions earned in January by Independent National Sales Directors as defined above **plus** the following which do not count toward NSD ranking: Sales Director commissions, Personal Team commissions and NSD contest bonuses. Cars, prizes, etc., are **not** included in these amounts.

Sapphire

Karen Piro**.....\$46,653
Jana Cox*.....25,626
Dawn A. Dunn.....23,237
Lupita Ceballos**.....22,498
Judie McCoy*.....21,923
Gloria Báez*.....20,211
Julianne Nagle*.....18,746
Tammy Crayk.....18,405
Shannon C. Andrews*.....18,253
Sandy Valerio.....15,485
Lorraine B. Newton.....15,188
Davanne D. Moul*.....13,089
Valerie J. Bagnol*.....12,991
Pam Klickna-Powell.....12,961
Kimberly D. Starr.....12,054
Pam L. Higgs.....11,835
Nancy A. Moser.....11,474
Jan L. Thetford.....11,448
Alia L. Head.....11,318
Sharon L. Buck.....11,279
Sherril L. Steinman.....10,688
Joy L. Breen.....10,050
Diana Sumpter.....10,036
Karen B. Ford.....9,241
Debra M. Wehrer.....9,043
Charlotte G. Kosena.....8,964
Brigit L. Biddle.....8,867
Paola Ramirez.....8,368
Gillian H. Ortega.....8,346
Kendra Crist Cross.....8,290
Ann Brown.....8,062
Maribel Barajas.....7,658
Jill Moore.....7,334
Carol L. Stoops.....7,067
Gladis Elizabeth Camargo*.....6,310
Magdalena Nevárez*.....5,802
Elizabeth Sánchez.....5,377
María Aguilar.....5,028
María Guadalupe Díaz.....4,899
Mirna Mejía de Sánchez.....4,637

Emerald

Gloria Mayfield Banks***.....\$43,275
SuzAnne Brothers*.....35,270
Kathy S. Helou*.....32,223
Debi R. Moore*.....23,177
Sherry Giancristoforo**.....23,110
Kerry Buskirk*.....19,355
Lily Orellana.....17,310
Dacia Wiegandt.....17,083
Cindy Fox*.....16,160
Jamie Cruse-Vrinos.....15,021
Kay E. Elvrn.....14,989
Mona Butters.....14,131
Janet Tade*.....13,759
Joanne R. Bertalan*.....13,488
Pamela Tull.....13,466
Sabrina Goodwin Monday.....13,431
Yvonne S. Lemmon.....13,254
Cathy Bill*.....12,191
Consuelo R. Prieto.....11,888
Brenda Segal*.....11,244
Miriam Gómez-Rivas.....11,077
Cristi Ann Millard.....10,648
Cathy Phillips.....10,318
Jackie LaPrade.....9,944
Kathy Rodgers-Smith.....9,929
Morayma Rosas.....9,167
Kym A. Walker*.....8,689
Judy Harmon.....8,671
Nora L. Shariff*.....8,589
Crisette M. Ellis.....8,550
Dawn Otten-Sweeney.....8,459
Shelly Gladstein.....7,974
Sherry A. Alexander.....7,902
Regina Hogue.....7,851
Natalie Privette-Jones.....7,631
Esther Whiteleather.....7,629
Barbara Whitaker.....7,439
Sandra Chamorro.....6,194
Carmen Rios.....5,770
Caterina M. Harris.....4,745
Phyllis R. Sammons.....4,287
Pamela Cheek.....3,547

Pearl

Darlene Berggren**.....\$29,120
Jan Harris**.....28,177
Cheryl Warfield**.....27,665
Cindy A. Williams.....26,563
Pamela Waldrop Shaw.....23,757
Stacy L. James*.....23,440
Elizabeth Fitzpatrick*.....22,646
Halina Rygiel*.....21,669
Sylvia Kalicak.....19,183
Anita Tripp Brewton*.....18,160
Jackie Swank*.....18,150
Lisa Allison*.....15,797
Sandy Miller.....15,764
Maureen S. Lidda*.....15,253
Mary C. Estupinian-Martel*.....15,226
Nancy Bonner*.....14,103
Judy Brack.....13,371
Lise T. Clark*.....12,722
Monique Todd Balboa.....12,517
Pat Campbell.....12,401
Julie Krebsbach.....11,876
Wilda DeKerlegand*.....11,847
Anita N. Conley.....11,658
Anabell Rocha.....11,536
Jane Studrawa.....11,450
Linda Kirkbride.....11,255
Robin Rowland.....11,052
Barbara Stinchak*.....10,864
Gilda McGuire.....10,635
Lynda Jackson*.....10,589
Bett Vernon.....10,273
Maureen Myers.....9,797
Wadene Claxton-Prince.....9,658
Kathy C. Goff-Brummett.....9,487
Shirley M. Oshiro.....8,788
Deb Pike.....8,655
Beatrice Powell.....8,227
Cathy E. Littlejohn.....8,092
Rosalie Ann Medjesky.....8,027
Allison LaMarr.....7,582
Vernella Benjamin.....7,475
Sonja Hunter Mason.....6,317
Kathy Jones.....6,058
Bettye M. Bridges.....5,815

Diamond

Barbara Sunden***.....\$71,053
Lisa Madson.....37,216
Patricia Rodriguez-Turker**.....30,639
Anita Mallory Garrett-Roe**.....30,011
Linda C. Toupin.....25,867
Gloria Castaño**.....20,647
Mary Diem*.....19,176
Sonia Páez.....19,098
Diane Underwood.....18,255
Joyce Z. Grady.....17,066
Jo Anne Cunningham.....15,061
Dalene Hartshorn.....15,033
María Monarrez.....13,843
Connie A. Kittson.....13,398
Evelinda Díaz*.....12,117
Ada García-Herrera.....11,292
Gladys C. Reyes.....10,572
Andrea C. Newman.....10,068
Diana Heble.....9,520
Isabel Venegas.....8,554
Rosa Carmen Fernández.....7,005
Betty Gilpatric.....6,639
Carol Lawler.....6,496
Gina Rodriguez.....5,592
Jan Mazzotti.....5,307
Rosibel Shahin*.....5,103

Ruby

Carol Anton**.....\$46,560
Pat Danforth*.....31,403
Karlee Isenhardt*.....24,819
Sue Kirkpatrick*.....24,069
Shirley Oppenheimer*.....19,097
Wanda Dalby**.....16,658
Kimberly R. Copeland.....16,517
Ronnie D'Esposito Klein*.....16,078
Pamela A. Fortenberry-Slate*.....15,964
Lynne G. Holliday.....15,217
Jeanne Rowland*.....14,449
Kate DeBlander.....14,401
Rebecca Evans*.....14,347
Cyndee Gress.....13,330
Gay Hope Super.....13,015
Amy Dunlap.....12,953
Judy Kawiecki.....12,831
Janis Z. Moon.....12,280
Pam Ross*.....12,033
Michelle Sudeth*.....11,672
Jo Anne Barnes.....11,274
Bea Millsagle.....10,924
Scarlett S. Walker*.....10,627
Vicki Jo Auth.....10,551
Toni A. McElroy.....10,541
Patricia Lane.....9,940
Gena Rae Gass.....9,787
Vicky L. Fuseller.....9,733
Kelly McCarroll.....9,475
Kirk Gillespie.....9,259
Cheryl J. Davidson.....9,130
Candy D. Lewis.....8,575
Cindy Z. Leone.....8,093
Rhonda L. Fraczkowski.....7,787
Terri Schafer.....7,679
Donna B. Meixsell.....7,548
Katie Walley.....7,203
Margaret M. Bartsch.....7,002
Cindy Towne.....6,544
Thea Elvin.....6,184
Renee D. Hacklerman.....4,279

*Denotes Senior NSD

**Denotes Executive NSD

***Denotes Elite Executive NSD

new debuts/debutes November/noviembre

New Independent Sales Directors. For more information, log on to the Mary Kay InTouch® Web site. Under "Resources," click on "DIQ Program." /Nuevas Directoras de Ventas Independientes. Para más información, visita el sitio electrónico *Mary Kay InTouch®*. En el apartado "Recursos", haz clic en "Programa DIQ".



Elizabeth Aguilera Bakersfield, Calif. F. Alacar Unit	Cynthia Arne New Fairfield, Conn. T. Hulsman Unit	Linda B. Corwin Lawton, Okla. J. Garrett Unit	Kathy S. French Plano, Texas M. Murray Unit	Megan Kathleen Gaines Modesto, Calif. J. Percy Unit	Betsy Medak Hayes Carmichael, Calif. M. Napoli Unit	Shelley R. Hines Highland Village, Texas P. Townes Unit	Joel James Liwanag Garland, Texas R. Ignacio Unit	Marietu Samba* Mableton, Ga. J. Ehimika Unit	Judi Diane Wehrli* Arden, N.C. J. Thomas Unit
--	--	--	--	--	--	--	--	---	--

Congratulations to Sales Directors **Deborah Marie Andrews**, Euless, Texas, M. Kopec Unit; **DeAnne Batchelor**, Rose Hill, N.C., S. Casteen Unit; **Sarah Bullock Hickner**, Reston, Va., K. Gillespie Unit; **Lindsey Elizabeth Keyes**, Chelsea, Mich., L. Zimmerman Unit; **Jean Leonhardi**, Manchester, Mo., J. Maloney Unit; **Megan Renee Mock**, Blanco, Texas, M. Cason Unit; **Chioma Joy Nnadi**, Brooklyn Center, Minn., H. Godswill Unit; **Kristina Lynn Price**, West Winfield, N.Y., R. Pluchino Unit; **Marisa Rose Schleifer**, Imperial, Mo., A. Dunlap Unit; **Jennifer L. Silverio**, Ware, Mass., K. Bilotti Unit; **Karri Zeiler**, The Colony, Texas, K. Copeland Unit; photos unavailable at press time./Felicitades a estas Directoras y Director de Ventas cuyas fotos no estaban disponibles al cierre de edición.

*Previously debuted./Debutó con anterioridad.

Dean's List/Lista del Decano (January 2009 debuts/debutes de enero 2009)

The top three Honors Society members from each debuting class who have the highest adjusted unit wholesale production of their debut class and who have at least 50 unit members by the end of the twelfth month following their debut date./Las primeras tres integrantes de la Sociedad de Honor de cada clase de debut con la más alta producción de unidad ajustada al mayoreo de su clase y que cuenten con por lo menos 50 integrantes de unidad al final del duodécimo mes de su fecha de debut.

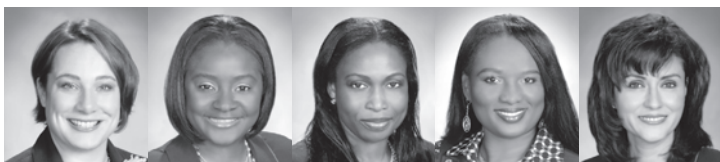


Jessica Milagros Perez Sarasota, Fla. S. Páez Area Diamond Seminar	April Landrum-Johns Smyrna, Ga. C. Williams Area Pearl Seminar
--	--

Congratulations to Sales Director **Angelia Clifton**, Ocala, Fla., J. Bertalan Area, Emerald Seminar; photo unavailable at press time./Felicitades a esta Directora de Ventas cuya foto no estaba disponible al cierre de edición.

Honors Society/Sociedad de Honor (January 2009 debuts/debutes de enero 2009)

Independent Sales Directors whose adjusted unit wholesale production is at least \$60,000 and who have at least 50 unit members by the end of the twelfth month following their debut date./Las Directoras de Ventas Independientes cuya producción de unidad ajustada al mayoreo es por lo menos de \$60,000 y tienen por lo menos 50 integrantes de unidad al final del duodécimo mes de su fecha de debut.



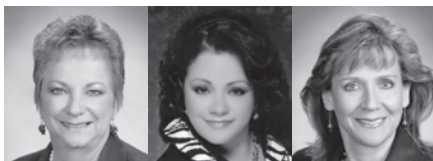
Kelly Clare Canzone Stanhope, N.J. C. Gress Area	Teka-Ann S. Haynes Mentone, Calif. Ruby Go Give Area	Olubukola Osunoyomi Bordentown, N.J. Ruby Go Give Area	Abosede Yetunde Oyediran Medford, N.Y. K. Isenhardt Area	Patricia Rodriguez Corona, Calif. R. Evans Area
---	---	---	---	--

Congratulations to Sales Directors **Esther Omolola Awe**, Dallas, Ga., Ruby Go Give Area; **Maria R. Hernandez**, Norwalk, Calif., R. Evans Area; **Chioma Nwosu**, Langhorne, Pa., Ruby Go Give Area; **Kimberly Rainey Taylor**, Clover, S.C., Ruby Go Give Area; photos unavailable at press time./Felicitades a estas Directoras de Ventas cuyas fotos no estaban disponibles al cierre de edición.

Fabulous 50s/Fabulosos 50

(July 2009 debuts/debutes de julio 2009)

Independent Sales Directors whose adjusted unit wholesale production is at least \$30,000 and who have at least 50 unit members by the end of the sixth month following their debut date./ Las Directoras de Ventas Independientes cuya producción de unidad ajustada al mayoreo es por lo menos de \$30,000 y cuentan con por lo menos 50 integrantes de unidad al final del sexto mes de su fecha de debut.



Deborah Amelia Davis
Garland, Texas
Ruby Go Give Area

Maria Del Rocio Ramirez
Modesto, Calif.
Ruby Go Give Area

Jean Williamson
Henderson, Nev.
R. Evans Area

On the Move/En acción

(November 2009 debuts/debutes de noviembre 2009)

Independent Sales Directors whose adjusted unit wholesale production is at least \$15,000 by the end of the third month following their debut date, and who have added three or more qualified new personal team members whose Independent Beauty Consultant Agreements and minimum of \$600 in wholesale Section 1 orders were received during the three months following their debut date./Las Directoras de Ventas Independientes cuya producción de unidad ajustada al mayoreo es de por lo menos \$15,000 al final del tercer mes de la fecha de su debut, y que hayan obtenido tres o más nuevas integrantes de equipo personal calificadas cuyos Acuerdos de Consultora de Belleza Independiente y pedidos por un mínimo de \$600 de la sección 1 al mayoreo fueron recibidos durante los tres meses después de la fecha de su debut.

Kristina Lynn Price

Karri Zeiler

New Team Leaders/Nuevas Líderes de Equipo

Independent Beauty Consultants who have at least five active personal team members for the first time./Las Consultoras de Belleza Independientes que por primera vez obtuvieron por lo menos cinco integrantes de equipo personal activas.

Joline P. Atkins
Amber S. Barron
Ashley K. Becker
Annette Blarer
Tonya Y. Bowman
Angela E. Butch
Karissa M. Butler

Shay Le M. Cheatwood
Paul Chiaverini
Susan C. Cormier
Brendan O. Egemasi
Mary E. Fernandez
Amy R. Fogarty
Vicky Hachler

Carol M. Holcombe
Adria L. Irwin
Mamee Jordan
Deborah A. Labit-Stricks
Sarah E. Levy
Tamara N. Long
Elizabeth A. Madrak

Paula T. Miller
Marion D. Mironchik
Karla Moreno
Michelle L. Perry
Sondra Presho
Lupita M. Rojas
Adrienne L. Rose

Margarita M. Sandoval
Amber S. Smith
Katie L. Smith
Marli Sousa
Jeanne M. Waneka

13% Club/Club del 13%

Congratulations to the top 25 Independent Beauty Consultants and Independent Sales Directors in the Ruby area earning 13 percent personal team commissions. They placed a personal minimum \$600 wholesale Section 1 order and had at least five personal team members each place a minimum of \$200 in wholesale orders during January./Felicitaciones a las primeras 25 Consultoras de Belleza Independientes y Directoras de Ventas Independientes en el área Rubí que ganaron las comisiones del 13% por equipo personal. Éstas hicieron un pedido personal mínimo de \$600 de la sección 1 al mayoreo y tuvieron por lo menos cinco integrantes de equipo personal que hicieron cada una pedidos por un mínimo de \$200 al mayoreo en enero.

Sales Director Juliet Ebele Okonkwo\$2,648.91
Sales Director Winifred Nonye Ogbunamiri2,394.05
Sales Director Shelly Renae Black.....1,854.27
Sales Director Augusta C. Onyenemere.....1,653.18
Sales Director Juliet Igboanusi.....1,616.49
Sales Director Inez M. Thayer.....1,591.17
Sales Director Diane Covington.....1,573.39
Sales Director Eva E. Holguin.....1,528.87
Sales Director Stella Smith-Plus.....1,457.04

Kristin Oakes Milner, S. Goins Unit.....1,380.63
Sales Director Chioma Nwosu.....1,352.13
Sales Director Ann Kuehler.....1,349.51
Sales Director Lisa Blackmore.....1,283.49
Sales Director Stephanie Honeycutt.....1,267.89
Sales Director Michele Semper.....1,248.52
Sales Director Dorothy C. Ibe.....1,246.42
Sales Director Uzo Ogbutor.....1,237.05
Sales Director Kali DeBlander Brigham.....1,222.78

Sales Director Vanessa R. Upkins1,206.40
Angelina Ogbuokiri, W. Ogbunamiri Unit.....1,173.84
Sales Director Jacqueline N. Alford.....1,166.72
Sales Director Karen L. Hamer.....1,160.45
Sales Director Thessy Nkechi Nwachukwu1,139.22
Karissa Melea Butler, S. Goins Unit.....1,127.62
Sales Director Mary Lou Ardohain.....1,127.13

Gold Medals/Medallas de Oro

Independent Beauty Consultants and Independent Sales Directors who added a minimum of five Independent Beauty Consultants to their team within one calendar month./Las Consultoras de Belleza y Directoras de Ventas Independientes que en un mes de calendario lograron un mínimo de cinco Consultoras de Belleza Independientes para su equipo.

NAME/NOMBRE	NEW TEAM MEMBERS/ NUEVAS INTEGRANTES DE EQUIPO					
77 GOLD MEDALS/MEDALLAS DE ORO						
Sales Director Tongbai Mason		6	Sales Director Edith Okafor	5	Sales Director Shelly Black	5
60 GOLD MEDALS/MEDALLAS DE ORO						
Sales Director Toni Zaino		6	19 GOLD MEDALS/MEDALLAS DE ORO			
48 GOLD MEDALS/MEDALLAS DE ORO						
Sales Director Gloria Dominguez		7	Sales Director Roberta Sallustio	5	Sales Director Dora Escobedo	5
44 GOLD MEDALS/MEDALLAS DE ORO						
Sales Director Stella Smith-Pius		8	18 GOLD MEDALS/MEDALLAS DE ORO			
41 GOLD MEDALS/MEDALLAS DE ORO						
Sales Director Consuelo Tinajero		5	Sales Director Maria Frayre	13	Sales Director Jennifer McNulty	6
38 GOLD MEDALS/MEDALLAS DE ORO						
Sales Director Thessy Nwachukwu		5	Sales Director Adriana Romero	5	Sales Director Julie Smith	5
36 GOLD MEDALS/MEDALLAS DE ORO						
Sales Director Jan Maloney		8	8 GOLD MEDALS/MEDALLAS DE ORO			
32 GOLD MEDALS/MEDALLAS DE ORO						
Sales Director Carlotta Sandiford-Coleman		5	Sales Director Grace Epuechi	5	Sales Director Lacy Nickelson	5
28 GOLD MEDALS/MEDALLAS DE ORO						
Sales Director Jacqueline Donna		5	Sales Director Nina Shull	5	7 GOLD MEDALS/MEDALLAS DE ORO	
Sales Director Julie Smith		5	Sales Director Candice Faure-Anderson			5
27 GOLD MEDALS/MEDALLAS DE ORO						
Sales Director Lynnise Finney		5	Sales Director Deborah Oertel			5
Sales Director Inez Thayer		16	6 GOLD MEDALS/MEDALLAS DE ORO			
25 GOLD MEDALS/MEDALLAS DE ORO						
Sales Director Ivonne Rodriguez		7	Sales Director Nkechi Agim	5	Sales Director Chioma Nwosu	5
23 GOLD MEDALS/MEDALLAS DE ORO						
Sales Director Augusta Onyenemere		5	Sales Director Chioma Nwosu	5	Sales Director Winifred Ogbunamiri	12
22 GOLD MEDALS/MEDALLAS DE ORO						
Sales Director Melissa Almanza		7	Sales Director Winifred Ogbunamiri	12	Sales Director Juliet Okonkwo	6
21 GOLD MEDALS/MEDALLAS DE ORO						
Sales Director Lupita Ramirez		5	Sales Director Juliet Okonkwo	6	Sales Director Anna Palomo	6
20 GOLD MEDALS/MEDALLAS DE ORO						
Sales Director Margaret Allison Reiser		6	Sales Director Anna Palomo	6	Sales Director Leah Taylor	5
Sales Director Isidora Camargo		5	5 GOLD MEDALS/MEDALLAS DE ORO			
19 GOLD MEDALS/MEDALLAS DE ORO						
Sales Director Stephanie Honeycutt						10
Sales Director Tammy Lacy						5
12 GOLD MEDALS/MEDALLAS DE ORO						
Sales Director Leslie List						5
Sales Director Kelly Summers						5
11 GOLD MEDALS/MEDALLAS DE ORO						
Sales Director Gladys Hines						6
Sales Director Marina Najera						5
Maria Nava, R. Rebollar Unit						6
10 GOLD MEDALS/MEDALLAS DE ORO						
Sales Director Florence Alacar						6
Sales Director Cristina Carper						5
Sales Director Nadine Daniel-Hurry						5
Sales Director Margaret Leonelli						6
Sales Director Ngozi Ogbuagu						6
9 GOLD MEDALS/MEDALLAS DE ORO						
Sales Director Esther Awe						6
Sales Director Cindy Bermea						5
5 GOLD MEDALS/MEDALLAS DE ORO						
Sales Director Sherrie Clemons						5
Sales Director Mia Greene						11
Debbie Kinney, S. Eaton Unit						6
3 GOLD MEDALS/MEDALLAS DE ORO						
Sales Director Jenni DeJacimo						7
Sales Director Rosita Girona						5
Sonya Lan, T. Wilson Unit						12
Sales Director Kimberly Perkins						5
Candie Rivera Stier, A. Hofmann Unit						5
2 GOLD MEDALS/MEDALLAS DE ORO						
Opeoluwa Adenuga, G. Ebere Unit						5
Summer Carnes, T. Waller Unit						5
Heather Dixon, K. McCarroll Unit						8
Megan Emerson, P. White Unit						5
Marnee Jordan, C. Carper Unit						8
Mikkalisa Lefkowitz, A. Ware Unit						5
Michele Mayfield, J. Gammill Unit						5
Marion Mironchik, D. Hack Unit						10
Amber O'Neil Hui, S. Arbaugh Unit						5
Amy Rossing, T. Danforth Unit						5
Sales Director LaTisha Simmons						5
Marnie Tittle, K. Shepperd Unit						6
1 GOLD MEDAL/MEDALLA DE ORO						
Sales Director Lauretta Akpoyoware						5
Tonya Bowman, J. Beecher Unit						5
Jessica Burditt, T. Smith Unit						9
Karissa Butler, S. Goins Unit						8
Jennifer Cervantes, K. Gardner Unit						5
Shay Le Cheatwood, S. Goins Unit						5
Martha Clark, E. Ramirez Unit						9
Susan Cormier, J. Thompson Unit						5
Pamela Culver, M. Joy Unit						5
Sales Director Debbie Elledge						8
Nadine Farmer, P. Cox Unit						6
Lisa Grisolia, D. Ludewig Unit						9
Gayle Guggisberg, C. Huber Unit						5
April Heimiller, K. Gardner Unit						5
Vickie Howell, J. Lee Unit						5
Whitney Jeffries, B. Menestrina Unit						5
Angela Jones, J. DeJacimo Unit						5
Sales Director Lisa Lehman						5
Sarah Levy, A. Vitorino Unit						5
Sales Director Silvia Madera						5
Betty Mason, H. Amato Unit						5
Louisa Olomu, M. Mack Unit						5
Michelle Perry, J. Beecher Unit						5
Lynda Poblete, H. Valdez Unit						6
Rachel Rials, M. Mock Unit						5
Bonnie Rickert, H. McKinney Unit						5
Lupita Rojas, D. Padilla Unit						5
Cheri Scott Schad, M. Arellano Unit						7

Grand Achievers/Gran Ganadoras

(January 2010 qualifiers/que califican para enero 2010)

Independent Beauty Consultants who earned the use of a Consultant Career Car or up to \$375 monthly Cash Compensation. Independent Sales Directors who earned up to \$375 monthly Cash Compensation. Grand Achievers must achieve \$18,000 combined personal/team wholesale Section 1 production and have at least 12 active personal team members within a one- to four-month qualification period. (Effective Nov. 1, 2009, qualification requirements for Grand Achievers program have changed. See Mary Kay InTouch® for details.)/Las Consultoras de Belleza Independientes que han ganado el uso del auto profesional para Consultoras o hasta \$375 en compensación mensual en efectivo. Las Directoras de Ventas Independientes que han ganado hasta \$375 en compensación mensual en efectivo. Las Gran Ganadoras deben lograr \$18,000 en producción personal/de equipo combinada al mayoreo de la sección 1 y contar por lo menos con 12 integrantes de equipo personal activas en un periodo de calificación de uno a cuatro meses. (Los requisitos de calificación del programa de Gran Ganadoras cambiaron a partir del 1 de Nov. de 2009. Consulta los detalles en Mary Kay InTouch®.)

CONSULTANTS/CONSULTORAS

Jo Anne Britt**
Jessica Lynn Burditt
Deborah Gail Duncan**
Sandra Ann Gustafson
Marcela Marcy-Espinoza**

Michelle Mayfield**

Rachel Mega**
Mary Mesward
Kristin Oakes Milner**
Maria Guadalupe Ramirez*
Bonnie Lynn Rickert

Judy Rocha**

Marci Lee Viviano

**SALES DIRECTORS/
DIRECTORAS DE VENTAS**
Maria Acosta Garcia**

Michelle M. Arellano**

Elizabeth E. Bottasso**
Sandra L. Broussard**
Lorena Hankins**
Dalia Lopez**
Terry Munter**

Kathleene Runnels**

Barbara Ann Savino**
Katie Marie Thom**
Cindy Wynn**
Irlene Zapalac**

*denotes requalified driver
**denotes December qualifier

*denota conductora recalificada
**denota que calificó en diciembre

recognition/reconocimiento

Achievement Circle/Círculo de Logros

Listed below is the ranking of the top 100 Independent Sales Directors in each Seminar area based on their January 2010 estimated unit retail production./Lista de las primeras 100 Directoras de Ventas Independientes en cada Seminario según su producción de unidad estimada al menudeo de enero de 2010.

Sapphire/Zafiro

Kim Cowdell.....	\$70,470
Kim Maynor.....	69,991
Julia Mundy.....	62,917
Julie Weaver.....	62,467
Kristi M. Montesana.....	58,433
Debbie A. Weld.....	57,836
Lara F. McKeever.....	55,622
Audrey K. MacDowall.....	54,823
Brynnie M. Blacock.....	53,690
Tammy Romage.....	53,525
Joanna Helton.....	53,372
Angela D. LaFerry.....	53,268
Lady Ruth Brown.....	53,192
Ann W. Sherman.....	51,728
Faith A. Gladding.....	50,216
Roxanne McInroe.....	49,985
Maranda Michelle Rains.....	49,153
Michelle Sara Moore.....	48,928
Lisa Louise Winton.....	48,459
Cheri L. Taylor.....	48,433
Peggy B. Sacco.....	47,790
Tabitha A. Hallums.....	47,680
Tracy Potter.....	47,329
Sherri Reindl.....	46,623
Diane Bruns.....	45,848
Sylvia Boggs.....	45,642
Dolores Keller.....	45,100
Terry A. Hensley.....	45,056
Sharon K. Swayzer.....	43,957
Margaret Neill.....	43,522
Jalene Simpson Weston.....	43,103
Jennifer G. Bouse.....	42,922
Marty Ulmer.....	41,901
Connie L. Russo.....	41,233
Ruby Garner.....	40,976
Nancy W. Pettaway.....	40,540
Jodi L. Feller.....	39,879
Linda A. Jones.....	39,674
Kathy R. Bullard.....	39,008
Brenda Bennett.....	39,001
Linda Klein.....	38,809
Dena Smith.....	37,720
Christy Bigham.....	37,655
Josefa Chacon.....	37,623
Angeles Sosa.....	37,195
Joli A. Dockery.....	36,831
Linda L. Quillin.....	36,649
Phyllis I. Pinski.....	36,438
Lisa Moon-Cox.....	36,153
Pam Garner Moore.....	36,017
Cindy S. Kriner.....	35,938
Melody Missick.....	35,772
Jennifer L. Semelsberger.....	35,739
Randi Stevens.....	35,512
Cecilia Boothoo.....	35,068
Nannette G. Short.....	34,902
Kim B. Roberts.....	34,854
Bonnie Crumrin.....	34,752
Shelia Berry.....	34,462
Debie Mary Nunez.....	34,426
Danice C. McElDowney.....	34,315
Angie S. Day.....	34,301
Wendy Clausen.....	33,563
Karen L. Kunzler.....	32,872
Maria Eugenia Silva.....	32,838
Gayle J. Green.....	32,762
Lynn Baer Roberts.....	32,627
Jennifer Sallsberg.....	32,604
Theresa L. Addison.....	32,576
Linda J. Bird.....	32,566
Ann Ferrell Smith.....	32,474
Bea Heath.....	32,340
Barbara A. Tyler.....	32,330
Effie Parsons.....	32,224
Elaine B. Lewis.....	32,198
Jerlene Vrana.....	32,174
Gloria Stake Miller.....	32,097
Heather L. Bohlinger.....	32,008
Lyris Yee.....	31,937
Sharon Rath.....	31,713
Deanne Black.....	31,504
Shelley Townsley.....	31,468
Lynette R. Bickley.....	31,439
Jahna L. Stone.....	31,072

Deborah Robina.....	30,905
Norma Hood.....	30,769
Krista A. Johnson.....	30,744
Char Griffin.....	30,736
Martha Alicia Gonzalez.....	30,689
Ronda Compton.....	30,609
Betty H. Schuler.....	30,459
Kenettia A. Adams.....	30,375
Terry M. Holcomb.....	30,208
Linné Lane.....	30,151
Lorraine S. Kigar.....	30,134
Cheryl Kay Shaver.....	30,081
Holly C. Stocks.....	29,977
Krista Neal Warner.....	29,646
Natalie Reed.....	29,644
Jeannie Helm.....	29,644

Emerald/Esmeralda

Auri Hatheway.....	\$63,813
Candy Jackson.....	62,081
Ann Shears.....	54,932
Nancy Boucher.....	54,559
Arianne C. Morgan.....	52,293
Linda Bradley.....	50,639
Denise G. Kucharski.....	49,575
Pattie A. Robinson.....	49,129
Hope S. Pratt.....	48,823
Stacy D. Foust.....	48,136
Hollie R. Sherrick.....	47,919
Ayobami Olanrewaju Olusa.....	47,732
Pam Kelly.....	46,839
Anita Rodriguez.....	46,200
Christie I. Ehiobu.....	45,068
Nancy A. Berlin.....	44,022
Linda M. Taft.....	43,670
Rose Campbell.....	43,522
Jeannine R. DeVore Harris.....	42,352
Lauren M. Sweeney.....	40,467
Marcela Sierra.....	40,029
Jo M. Cotton.....	39,678
Jackie L. Root.....	39,663
Barbara Pleet.....	39,511
Sheri Farrar-Meyer.....	39,297
Michele Martella Armes.....	38,965
Karen A. Jorgenson.....	38,839
Stacy S. Gilson.....	38,650
Karen E. Riddle.....	38,622
Lisa A. Hawkins.....	38,411
Pat Forehand.....	38,100
Angel L. Hurley.....	37,483
Kay Dickerson.....	36,966
Elaine K. Williams.....	36,824
Myrna I. Colon.....	36,681
Renita Griswell Peele.....	36,374
Victoria Moham.....	35,991
Valerie Yokie.....	35,875
Judith Beede.....	35,346
Maria Beddick.....	35,251
Gail Patton Menefee.....	35,217
Janice J. Baker.....	34,996
Sheila J. McCune.....	34,742
Kathy P. Oliveira.....	34,675
Lynn F. Huckles.....	34,373
Connie S. Miller.....	34,339
Dana Dean Cornalino.....	34,231
Heather Shea Catts.....	33,997
Jeanette E. Beichle.....	33,819
Sonya C. D'Herde.....	33,803
Kimbi L. Bartik.....	33,662
Debbie L. Bower.....	33,261
Maureen Frances Hausler.....	32,916
Cathy Apicello-Schneithorst.....	32,866
Susan Houser.....	32,849
Rita Jean Barthel.....	32,742
Lisa A. Griffin.....	32,335
Traci L. Smith.....	32,074
Brenda D. Elliott.....	31,707
Vicki Hunter.....	31,701
Shirley D. Rice.....	31,556
Katie L. Ashby.....	31,399
O'nelly Encarnacion Gomez.....	31,390
Susan A. Smith.....	31,153
Toya M. Drew.....	31,038
Trisha Taylor.....	30,769
Taylor L. Moore-Fehring.....	30,544

Christine J. Kurzawa.....	30,453
Barbara Gizzo.....	30,324
Agnes M. Grider.....	30,289
Carol Taylor.....	30,156
Maria Sanchez.....	30,147
Nancy Graham.....	30,117
Rhonda Kambeitz.....	29,961
Amie E. Kelly.....	29,606
Holly S. Neff.....	29,461
Barbara E. Sansing.....	29,317
Renee Duenckel.....	29,251
Doreen Stevens.....	29,157
Grace Hull.....	29,072
Penny R. Walker.....	29,050
Carol M. Fulton.....	28,989
Cheryl L. Foster.....	28,806
Pamela Rowe Krmzarick.....	28,743
Dana Ann Lamade.....	28,703
Jordan Helou Eicher.....	28,561
Sue Uibel.....	28,514
Vicki Powell.....	28,412
Annette D. Oxley.....	28,384
Lisa D. Ayers.....	27,771
Sondra N. Weaver.....	27,766
Evelyn Nail.....	27,755
Susie J. Serio.....	27,597
Rosemary Mitchell.....	27,577
Kristen L. Voyles.....	27,575
Constance E. Blaylock.....	27,500
Geri L. Gurreri.....	27,402
Lisa G. Wendland.....	27,352
Marianne L. Anderson.....	27,281
Joni Pritchard.....	27,219

Pearl/Perla

Kristin Myers.....	\$90,634
Jeanie Martin.....	63,388
Tracey L. Chavez.....	59,987
Cindy Machado-Flippen.....	58,777
Tina M. Wright.....	58,446
Nedra Ruby White.....	57,703
Kim L. McClure.....	56,720
Brenda Stafford.....	55,434
Patti Cornell.....	54,586
Shauna Lynn Abbotts.....	54,544
Ivonne K. Foster.....	54,518
Ruthie Baxter Hull.....	49,567
Janice Bresette-Mount.....	48,169
Rebecca Milligan.....	47,850
Katherine Mirkes Ward.....	47,360
Jeanie K. Nawalk.....	47,297
Kathy Eckhardt.....	46,788
Betsy C. Richard.....	46,279
Leah Michelle Lauchlan.....	45,912
Sharon Smith Wosinski.....	45,400
Patty Webster.....	45,165
Anne Geertsen.....	45,150
Terri Lewis.....	43,234
Susan M. Hohlman.....	42,184
Melissa Hamby.....	41,684
Diane Heckathorne.....	41,329
Diane M. Detesco.....	41,247
Lia Rene Carta.....	41,201
Jo Shuler.....	41,146
Holli Thompson Lowe.....	40,529
R. Sue Miller.....	40,266
Vicki Piccirilli.....	40,107
Lindsay R. Stewart.....	39,973
Tara Lynn Mitchell.....	39,377
Andrea Lee Converse.....	39,255
Stacey Craft.....	39,096
Suzie Kopacz.....	38,922
Shanna H. Jones.....	38,420
Alma C. Schule.....	38,036
Amya Orosietta.....	37,550
Terri Clorl-irwin.....	37,486
Shari M. Kirschner.....	37,389
Dandra Tatzler.....	37,232
Denise E. Crosby.....	37,228
Polly L. Smith.....	37,125
Victoria A. Pierle.....	37,001
Sheryl Frederic.....	36,991
Diana Maria Bermudez.....	36,836
Tamarie M. Bradford.....	36,702
Epsie J. Elmer.....	36,326

Christi G. Campbell.....	36,067
Jill A. Unruh.....	35,939
Michele Salisbury Rankin.....	35,813
Nicole Prinella Pratt.....	35,812
Amie N. Gambolan.....	35,810
Kathy Ahlwardt.....	35,718
Sylvia Limon Martinez.....	35,660
Dorothy D. Boyd.....	35,466
Lisa Olivares.....	35,464
Carolyn A. Smith.....	35,448
Kathy Lee.....	35,331
Judi Tapella.....	35,042
Kenna L. Ervin.....	34,422
Cindy S. Koenig.....	34,273
Julie Holmberg.....	34,194
Angel B. Toler.....	34,169
Shari L. Dworkin-Smith.....	34,120
Evelyn Pirhalla.....	34,005
Laura Poling.....	33,866
Keita Powell.....	33,862
Alicia Borkowska-Sattler.....	33,849
Pat Ringnald.....	33,683
Cynthia Ruccia.....	33,500
Kathryn L. Engstrom.....	33,482
Nicole J. Canamare.....	33,396
Nadine Bowers.....	33,347
Roya M. Mattis.....	33,343
Beverly M. Brown.....	33,343
Tammy Brown.....	32,949
Susan K. Janish.....	32,936
Holly L. Ennis.....	32,823
Becki Hackett.....	32,732
Amelie B. Kemogne.....	32,672
Pamela L. Castellana.....	32,664
Julie Hetherington.....	32,339
Carolyn Wilson.....	32,311
Richelle V. Barnes.....	32,098
Elizabeth B. Muna.....	31,890
Liane M. Terwilliger.....	31,545
Diane C. Cole.....	31,538
Maureen Shipp.....	31,287
Donna Stephano.....	31,237
Sherry S. Hanes.....	31,076
Charlene Grubbs.....	30,789
Loretto Chavez.....	30,830
Maribel Olivares.....	30,240
Kay Rubin.....	30,074
Alicia Gwilliam.....	30,022
Patty J. Olson.....	30,000
Kristi Sue O'Rourke.....	29,915

Diamond/Diamante

LaRonda Daigle.....	\$92,494
Marsha Morrisette.....	74,803
Priscilla McPheeters.....	70,383
Cecilia C. James.....	64,009
Almy Aligood.....	57,662
Mark Strauss.....	56,329
Melinda M. Balling.....	56,269
Karime Rosas.....	53,171
Amanda Blair Stokes.....	52,716
Petie L. Huffman.....	52,685
Mariann Biase Mason.....	51,896
Linda T. Cartiglia.....	51,428
Sonia Suyapa Bonilla.....	50,180
Tawnya Kremppes.....	49,259
Marni McKenna Hendricks.....	48,904
Jenny Siemonsma.....	48,402
Geri Anne Morris.....	47,903
Barbara E. Roehrig.....	47,570
Donna J. Saguto.....	47,415
Sherly Peterson.....	47,071
Terri J. Beckstead.....	47,041
Alicia Kingrey-Lokal.....	46,480
Stephanie A. Richter.....	45,915
Susan M. McCoy.....	45,674
Carolyn Thompson.....	45,294
Sandy Lasso.....	45,020
Dayana Polanco.....	44,620
Lisa DeWeber.....	44,505
Martha Kay Ralle.....	44,125
Carol Lee Johnson.....	43,820
Julie Neal.....	43,716
Brenda K. Howell.....	43,434
Kristin Jenae Rogers.....	43,269

Donna K. Smith.....	43,007
Meg Booker Steward.....	42,914
Ruth L. Everhart.....	42,887
Lisa A. Stengel.....	42,806
Andrea Shields.....	42,311
Shelly Palen.....	41,994
Heather M. Julson.....	41,950
Janet S. Chapman.....	41,863
Julie Schlundt.....	41,847
Pat A. Nuzzi.....	41,554
Kristen C. Spiker.....	41,359
Nancy Fox Castro.....	41,070
Elvi S. Lamping.....	40,590
Jenny R. DeMell.....	40,460
Orenda Raichel Hunniford.....	40,409
Lisa A. Raupp.....	39,761
Mary Kathryn King.....	39,418
Pat Joos.....	39,308
Nellie R. Anderson.....	39,171
Pamela K. Perkins.....	39,153
Betty McKendry.....	39,044
Chris Landaker.....	39,027
Rubielia Palacio.....	38,864
Patricia Carr.....	38,616
Lisa Peterson Hackbarth.....	38,286
Delmi Cristina Santos.....	38,236
Tina Marie Kocourek.....	38,166
Virginia Rowell.....	37,811
Ana X. Solis.....	37,792
Joy H. Rentz.....	37,559
Deborah Dudas.....	37,532
Rhonda Jean Taylor.....	37,312
Enma Patricia Bermeo.....	37,162
Jill Johnson.....	37,119
Susan Hattem Weeks.....	37,050
Joye Z. Stephens.....	37,035
Norma Lee Shaver.....	36,688
Kim A. Messmer.....	36,669
Betty Symons.....	36,646
Lisa Rada.....	36,261
Lesley A. Bodine.....	36,249
Emily Sims.....	36,241
Mary P. Creech.....	36,125
Dorothy S. Ferrigno.....	36,081
Patricia Rico.....	35,844
Nicki R. Hill.....	35,790
Blanca E. Arroyo.....	35,475
Karen M. Bonura.....	35,253
Wendy Hayum-Gross.....	34,705
Stephanie Audino.....	34,608
Heidi J. Norton.....	34,446
June Wylie-Longman.....	34,045
Mary Goss.....	34,021
Gayle Lenarz Kolsrud.....	33,939
Evelita Valdez-Cruz.....	33,893
Mireya Torres.....	33,772
Mary Beth Pfeifer.....	33,661
Ava Lynn Roberts.....	33,449
Judy Flummerfelt-Gerstner.....	33,443
Rose Rodriguez-Capone.....	33,366
Debra Allison.....	33,087
Diane L. Mentiply.....	33,021
Debbie Larson.....	32,889
Denise Nygard.....	32,875
Michelle Cape.....	32,743
Jan K. Siesky.....	32,466
Sally K. Anderson.....	32,447

Ruby/Rubí

Krystal Downey-Shada.....	\$84,166
Sonya F. Goins.....	83,685
Phuong L. White.....	73,176
Karen E. Gardner.....	67,801
Winifred Nonye Ogbunamiri.....	63,493
Sherly K. Goins.....	62,317
Kathleen C. Savorgnan.....	55,281
Diane Covington.....	50,662
Patti Maxwell.....	50,521
Marnie R. Yungler.....	50,099
Debbie A. Elbrecht.....	47,817
Candace Lynn Chambers.....	47,564
Thessey Nkechi Nwachukwu.....	47,239
Brenda Fenner.....	46,477
Lisa Anne Harmon.....	45,921
Suzanne Moeller.....	45,755

Juliet Ebele Okonkwo.....	44,990
Melissa Kaye Kopec.....	44,752
Breda M. Teal.....	44,304
Cheryl O. Fulcher.....	44,055
Somer Ballard Carter.....	43,974
Inez M. Thayer.....	43,414
Kali DeBlender Brigham.....	43,340
Laura A. Kattenbraker.....	42,942
Janet M. Gammill.....	42,729
Karen L. Hamer.....	42,612
Jamie Campbell Beecher.....	42,229
Jeanette M. Thompson.....	41,337
Lynette L. Meisel.....	41,266
Mary Alice Dell.....	41,245
Donna Clark-Driscoll.....	40,949
Judie Roman.....	40,927
Judy Lund.....	40,825
Rosalie Kuhen.....	40,563
Connie A. Brinker.....	40,509</

recognition

Commission Circle

Listed below are the Independent Sales Directors who earned the top 100 commissions and bonuses in each Seminar area in January 2010. Names in bold print are those who earned the maximum 13 percent Sales Director commission plus the maximum 13 percent personal recruit commission.

Sapphire

Julia Mundy	\$11,514.30
Julie Weaver	10,815.31
Debbie A. Weld	9,647.29
Faith A. Gladding	9,117.33
Kim I. Cowdell	9,015.51
Lara F. McKeever	8,999.12
Connie L. Russo	8,808.82
Diane Bruns	8,781.55
Lady Ruth Brown	8,606.68
Tammy Romage	8,192.19
Roxanne McInroe	8,004.37
Kim Maynor	7,989.96
Joanna Helton	7,894.50
Kristi M. Montesana	7,821.89
Cheri L. Taylor	7,760.10
Peggy B. Sacco	7,731.27
Tracy Potter	7,658.65
Audrey K. MacDowall	7,645.98
Dolores Keller	7,455.71
Sylvia Boggs	7,360.64
Ruby Garner	7,129.90
Brenda Bennett	6,869.37
Ann W. Sherman	6,845.88
Linda A. Jones	6,777.32
Sherri Reindl	6,731.68
Angeles Sosa	6,718.04
Michelle Sara Moore	6,684.75
Angie S. Day	6,651.92
Lisa Louise Winton	6,511.73
Josefa Chacon	6,485.09
Maranda Michelle Rains	6,469.74
Angela D. LaFrey	6,451.69
Brynn M. Blalock	6,410.77
Jill Beckstedt	6,322.20
Jennifer L. Semelsberger	6,168.38
Jalene Simpson Weston	6,063.50
Marty Ulmer	6,051.18
Joli A. Dockery	6,039.47
Lynn Baer Roberts	6,021.63
Linda Klein	6,005.85
Tabitha A. Hallums	5,989.68
Effie Parsons	5,867.58
Jodi L. Feller	5,845.86
Phyllis I. Piskner	5,780.27
Margaret Neill	5,776.44
Pam Garner Moore	5,674.86
Alison Jurek	5,663.26
Sharon K. Swazyer	5,654.71
Debra J. Witmer	5,620.60
Krista A. Johnson	5,583.04
Natalie Reed	5,568.60
Christy Bigham	5,503.37
Jennifer G. Bouse	5,500.53
Terry A. Hensley	5,430.31
Kathy R. Bullard	5,399.52
Gloria Stakemiller	5,391.86
Danice C. McDowney	5,354.15
Heather L. Bohlinger	5,258.19
Judy L. Staats	5,252.21
Debie Mary Nunez	5,219.17
Randi Stevens	5,212.43
Nancy W. Pettaway	5,205.80
Ann Ferrell Smith	5,194.00
Maria G. Leon	5,180.94
Deborah Robina	5,132.73
Anne Elizabeth Leanos	5,117.07
AnaMaria R. Cruz	5,078.89
Norma Hood	5,075.21
Gena Prince	5,012.21
Kim B. Roberts	4,985.05
Krista Neal Warner	4,951.80
Lyriss Yee	4,925.58
Dena Smith	4,918.17
Wendy Clausen	4,899.87
Karen L. Kunzler	4,896.66
Sue Ammons	4,894.10
Moleda G. Daley	4,886.49
Teodora Ahumada	4,870.12
Linda L. Quillin	4,869.65
Barbara J. Puckett	4,850.83
Patsy A. Glunt	4,810.24
Sandra A. Zavoda	4,797.74
Connie J. Lamp	4,773.03
Nannette G. Short	4,758.83
Shirley Stone	4,755.55

Robyn S. Cartmill	4,744.55
Anita Arvo	4,713.94
Gayle J. Green	4,701.11
Elizabeth A. Poole	4,696.57
Tasha Bergman	4,688.74
Frances Woodham	4,682.53
Marie E. Vlamnick	4,674.06
Crystal Dawn Lyon	4,665.07
Cindy S. Kriner	4,660.33
Melva M. Slythe	4,640.01
Martha Alicia Gonzalez	4,629.66
Cecilia Boodhoo	4,627.63
Julie Garvey	4,621.78
Ana Evelyn Rivera	4,616.60
Kathleen Kirkwood	4,610.75

Emerald

Auri Hatheway	\$10,243.87
Candy Jackson	9,998.13
Christie I. Ehiobu	9,746.25
Linda Bradley	8,428.43
Michele Martella Arnes	8,091.27
Ann Shears	7,981.23
Hollie R. Sherrick	7,863.98
Sheri Farrar-Meyer	7,613.25
Ayobami Olanrewaju	
Olusa	7,363.06
Rose Campbell	7,360.66
Angel L. Hurley	7,282.99
Helen Jakpor	7,235.51
Pattie A. Robinson	7,219.12
Hope S. Pratt	7,216.56
Karen E. Riddle	7,215.56
Denise G. Kucharski	7,165.04
Elaine K. Williams	7,024.87
Pam Kelly	6,990.04
Victoria Moham	6,931.43
Jo M. Cotton	6,917.14
Nancy A. Berlin	6,897.28
Stacy D. Foust	6,869.01
Denita Griswell Peele	6,839.25
Debbie L. Bower	6,805.31
Karen A. Jorgenson	6,779.65
Arianne C. Morgan	6,751.76
Nancy Boucher	6,675.17
Barbara Pleet	6,669.72
Maria Sanchez	6,307.67
Laura A. Armstrong	6,247.78
Maria Beddick	6,231.33
Kimbi L. Bartik	6,199.89
Jeanette E. Beichle	6,088.75
Pat Forehand	5,973.39
Stacy S. Gilson	5,937.31
Anita Rodriguez	5,902.89
Linda M. Taft	5,889.13
Trisha Taylor	5,873.28
Carol M. Fulton	5,869.49
Marianne L. Anderson	5,867.00
Evalina Chavez	5,784.33
O'nelly Encarnacion Gomez	5,760.79
Kay Dickerson	5,732.36
Connie S. Miller	5,728.89
Gail Patton Menefee	5,687.85
Myrna I. Colon	5,687.11
Lisa A. Hawkins	5,652.26
Jackie L. Root	5,635.79
Maritza Lanuza	5,579.71
Jeanine R. DeVore	
Harris	5,577.91
Paula Powell	5,575.00
Vicki Kelsch	5,570.39
Sheila J. McCune	5,550.61
Traci L. Smith	5,530.68
Pamela Rowe Krzmarzick	5,460.12
Marcela Sierra	5,308.51
Maria J. Serio	5,276.30
Lisa D. Ayers	5,269.65
Julie A. Griffin	5,214.50
Lauren M. Sweeney	5,207.56
Kathy P. Oliveira	5,125.84
Toyia M. Drew	5,116.95
Shirley D. Rice	5,106.28
Nancy Graham	5,103.78
Dana M. Chamberlin	5,074.12
Christine J. Kurzawa	5,072.65
Sonya C. D'Herde	5,032.95

Grace Hull	5,027.09
Nancy Harder	4,980.91
Charlotte Mantooth	4,973.49
Carol Taylor	4,938.01
Antonia Miranda	4,900.55
Amanda Governale	4,878.97
Rita Jean Barthel	4,874.34
Valerie Yokie	4,832.83
Helen M. Harlow	4,832.27
Katie L. Ashby	4,804.39
Sue Uibel	4,799.12
Janice J. Baker	4,782.19
Carol Bell	4,774.61
Cheryl L. Foster	4,773.03
Brenda D. Elliott	4,754.01
Shawnna D. Schneider	4,724.26
Jennifer Lueders	4,708.37
Judith Beede	4,680.18
Heather A. Carlson	4,669.01
Loures Monroy Rodriguez	4,665.90
Nancy Jean Leroy	4,659.38
Dana Dean Cornalino	4,646.88
Barbara E. Sansing	4,632.75
Meredith Richardson	4,592.66
Maureen Frances Hausler	4,574.93
Tammy K. Ayers	4,568.33
Leanne Parrino	4,546.27
Lynn F. Huckels	4,515.53
Janet S. Harmon	4,491.75
Bukayo Leary	4,465.20
Julie E. Cotton	4,460.80
Sonia E. Argueta	4,439.34
Rosemary Mitchell	4,431.23

Pearl

Jeanie Martin	\$13,865.26
Kristin Myers	12,459.81
Holli Thompson Lowe	10,933.44
Kim L. McClure	10,095.40
Alma Orrostita	9,304.50
Jeanie K. Navrkal	9,259.88
Susan M. Hohman	8,852.08
Nadine Bowers	8,748.42
Irene K. Foster	8,353.93
Tracey L. Chave	8,280.30
Elizabeth B. Muna	8,135.05
Anne Geertsen	7,874.58
Kathy Eckhardt	7,841.48
Cindy Machado-Flippen	7,820.57
Patti Cornell	7,723.36
Nedra Ruby White	7,649.47
Lisa Olivares	7,605.16
Julia Sander Burnett	7,524.74
Janice Baxter Hull	7,429.16
Shayna Lynn Abbotts	7,360.43
Brenda Stafford	7,330.05
Lindsay R. Stewart	7,322.13
Leah Michelle Lauchlan	7,223.43
Diane Heckathorne	7,078.49
Tina M. Wright	6,993.81
Elmy A. Valava	6,977.72
Tavny Pirhalla	6,730.06
Patty Webster	6,718.17
Tamarie M. Bradford	6,659.84
Betsy C. Richard	6,624.08
Sharon Smith Wisnoski	6,602.75
Alicia Borkowska-Sattler	6,593.86
Michele Salisbury Rankin	6,506.70
Dorothy D. Boyd	6,456.80
Susie Kopacz	6,411.83
Stacey Craft	6,367.21
Lia Rene Carta	6,303.60
Epsie J. Elmer	6,150.47
Tara Lynn Mitchell	6,148.65
Rebecca Mitchell	6,145.07
Sandra Taltzer	6,135.87
Katherine Mirkes Ward	6,104.01
Ruthie Bresette-Mount	6,028.69
Penny J. Jackson	5,916.91
Sally Moreno	5,885.27
Sylvia Limon Martinez	5,753.63
Diane M. Detesco	5,731.93
Melissa Hamby	5,717.05
Angel B. Toler	5,698.73
Judi Tapella	5,633.31
Cindy S. Koenig	5,631.51

Denise E. Crosby	5,615.36
Terri Lewis	5,614.26
Jo Shuler	5,598.30
Laura Poling	5,521.75
Maureen Shipp	5,484.75
Darlene Rutledge	5,462.29
Amie N. Gamboian	5,452.85
Julie Hetherington	5,448.90
Amelie B. Kemogne	5,424.23
Patmy J. Felix	5,417.86
Sherree E. Koehler	5,371.18
Keita Powell	5,356.19
R. Sue Miller	5,354.83
Maribel Olivares	5,351.09
Terri Cliriot-Irwin	5,310.77
Susan K. Janish	5,302.35
Amy C. Schule	5,290.82
Diana Maria Bermudez	5,272.76
Vicki Piccirilli	5,272.25
Sheryle Frederic	5,227.46
Patty J. Olson	5,225.16
Nicole J. Canamare	5,212.63
Jill A. Unruh	5,210.52
Sandra Giraldo Kirchhoff	5,104.11
Blythe Jolee Egbert	5,201.07
Stephani Prendes	5,197.70
Nicole Prinella Pratt	5,184.15
Victoria A. Pierle	5,064.82
Rita Schaefer	5,060.28
Shanna H. Jones	4,960.22
Becki Hackett	4,955.77
Carolyn A. Smith	4,939.61
Shelley Eldridge	4,916.28
Beverly M. Brown	4,909.49
Sherry L. Fields	4,889.77
Pat Ringnald	4,888.09
Donna Stephano	4,857.89
Kristi Sue O'Rourke	4,853.72
Andrea Lee Converse	4,822.27
Peggy Matish	4,800.26
Carolyn Wilson	4,798.71
Luanne Stewart	4,796.07
Kathy Lee	4,751.86
Renee Brooks	4,742.37
Tracy Foltz	4,721.99
Polly L. Smith	4,720.37
Marye Durrer	4,679.73
Shari M. Kirschner	4,674.74
Barbara R. Johnson	4,644.09

Diamond

LaRonda Daigle	\$12,826.37
Marsha Morrissette	10,872.12
Priscilla McPheeters	10,710.39
Martha Kay Raile	9,177.06
Melinda M. Balling	9,017.83
Cecilia C. James	8,732.68
Mary Strauss	8,511.00
Karime Rosas	8,500.49
Terri J. Beckstead	8,470.42
Ana X. Solis	8,304.15
Ruth L. Everhart	8,252.50
Amy Allgood	8,206.86
Sandy Griffith	8,148.57
Sheryl Peterson	7,987.72
Sunny Lasso	7,808.89
Marni McKenna Hendricks	7,607.52
Sonia Suyapa Bonilla	7,515.70
Carol Lee Johnson	7,461.30
Trudy Miller	7,415.37
Barbara E. Roehrig	7,232.56
Rose Rodriguez-Capone	7,214.65
Julia Neal	7,175.35
Lil DeWeber	7,157.63
Pat A. Nuzzi	7,120.67
Blanca E. Arroyo	6,972.04
Amanda Blaik Stokess	6,938.28
Julie Schlundt	6,908.88
Linda T. Carliglia	6,900.83
Brenda K. Howell	6,895.85
Kristin Jenae Rogers	6,876.54
Dayana Polanco	6,855.55
Maritza Estela Gonzalez	6,851.25
Heather M. Julson	6,814.81
Heidi Goelzer	6,731.42
Donna J. Saguto	6,719.01

Evetelia Valdez-Cruz	6,709.79
Petie L. Huffman	6,678.67
Vivian Diaz	6,653.24
Delmi Cristina Santos	6,579.05
Donna K. Smith	6,562.95
Alicia Kingrey-Lokai	6,527.65
Carolyn Thompson	6,514.36
Stephanie A. Richter	6,491.97
Tawnya Krempges	6,464.58
Betty Symons	6,416.94
Geri Anne Morris	6,404.33
Lesa Rae Franken	6,387.76
Joy H. Rentz	6,385.95
Meyra Esparza	6,369.95
Lou Cinda Utley	6,355.64
Susan M. McCoy	6,261.75
Deborah Dudas	6,257.34
Omosolape O.	
Akinoyenu	6,201.71
Elvi S. Lamping	6,193.20
Shelly Palen	6,182.69
Nancy Polish Dove	6,178.04
Sally K. Anderson	6,147.75
Mariann Biase Mason	6,104.11
Caroline Sagunsky	6,078.22
Mary Beissel	6,029.04
Betty McKendry	6,009.80
Nancy Fox Castro	6,009.31
Lisa A. Stengel	5,954.11
Fern Hendricks	5,947.42
Andrea Shields	5,861.96
Jenny Siernonsma	5,859.58
Karen M. Bonura	5,793.06
Nellie R. Anderson	5,779.41
Kim A. Messmer	5,753.55
Pat Joos	5,740.33
Anne Newcomb	5,739.61
Emily Sims	5,718.80
Jenny R. DeMell	5,704.84
Norma Lee Shaver	5,664.12
Rhonda Jean Taylor	5,662.78
Susan J. Pankow	5,654.65
Bisola Gbadamosi	5,629.47
Mary P. Creech	5,627.70
Debbie Larson	5,620.72
Silvia Sanchez	5,613.26
Janet S. Chapman	5,594.60
Lisa Rada	5,575.36
Mary Jacobson	5,568.15
Konie Slipy-Justus	5,557.16
Chris Landaker	5,550.93
Kathe Cunningham	5,545.45
Nicki R. Hill	5,538.93
Meg Booker Steward	5,535.47
Leticia Barajas	5,534.60
Lisa Peterson Hackbarth	5,521.26
Lisa A. Raupp	5,490.29
Annette Pace	5,470.07
Maria Flores	5,462.28
Orenda Raichel Hunniford	5,429.18
Julie Danskin	5,386.13
Wendy Hayum-Gross	5,326.36
Dorothy S. Ferrigno	5,270.85
Karla Beatriz Rivera	5,262.62
Aishat Bola Koya	5,247.53
Rubiela Palacio	5,234.29

Ruby

Thesay Nwachukwu	\$13,306.38
Phuong L. White	11,645.21
Winifred Nonye	
Ogunnamiri	10,822.39
Krystal D.	
Downey-Shada	10,799.19
Sonya F. Goins	10,120.37
Diane Covington	9,280.11
Sheryl K. Goins	9,213.30
Juliet Ebele Okonkwo	8,984.80
Inez M. Thayer	8,579.31
Karen E. Gardner	8,531.99
Stella Smith-Plus	8,130.26
Mary Alice Dell	8,057.99
Kathleen C. Savognan	7,675.64
Ekene S. Okafor	7,618.29
Marnie R. Yunger	7,596.29
Laura A. Kattenbraker	7,502.04

Krystal K. Walker	7,494.90
Lynette L. Meisel	7,424.42
Melissa Kaye Kopec	7,288.88
Patti Maxwell	7,015.11
Somer Ballard Carter	7,013.40
Kali DeBlander Brigham	6,981.80
Karlo Dominguez	6,893.49
Elizabeth A. Elder	6,848.02
Debbie A. Elbrecht	6,780.01
Candace Laurel Carlson	6,762.69
Augusta C. Onyemere	6,756.31
Donna Carick-Driscoll	6,746.19
Connie A. Brinker	6,723.23
Dorothy C. Ibe	6,607.39
Eva E. Holguin	6,504.92
Brenda Fenner	6,401.82
Mary Lou Ardohain	6,391.57
Judith Roman	6,367.29
Lisa Anne Harmon	6,305.73
Mary Sharon Howell	6,293.90
Michelle Semper	6,284.71
Vanessa R. Upkins	6,279.41
Jeanette M. Thompson	6,230.10
Linda Christenson	6,221.80
Cheryl O. Fulcher	6,214.43
Judy Lind	6,157.01
Juliet Igboanusi	6,111.17
Cindy P. Markowski	5,985.55
Karen L. Harner	5,955.85
Candace Lynn Chambers	5,911.60
Cristina Neves Carper	5,903.21
Cissy E. Warren	5,892.17
Suzanne Moeller	5,841.49
Liz Whitehouse	5,802.04
Jennifer Jean McNulty	5,756.76
Juliet N. Goertzen	5,756.24
Kathy Monahan	5,718.68
Rose Mary Noel	5,716.58
Janet M. Gammill	5,681.15
Ann Kuehler	5,662.71
Sherrie L. Clemons	5,542.12
Oye A. Onuoha	5,503.66
Sylvia J. Faulk	5,382.52
Amber L. Cook	5,375.39
Chioma Nwosu	5,370.34
Suzanne Tripp-Black	5,355.56
Terry Thole	5,342.41
Lisa A. DeLucia	5,336.13
Jamie Campbell Beecher	5,331.64
Breda M. Teal	5,297.65
Jeanie Ripley	5,196.66
Eleanor M. Reigel	5,195.50
Stephanie Honeycutt	5,114.30
Wanda Metzger	5,067.77
Deborah S. Bailye	5,017.09
Kelly Clare Canzone	4,983.34
Lacy Jane Nickelson	4,943.66
Vicki S. Lindsay	4,895.89
Rosalie Kuhn	4,883.46
Tina Hulsman	4,874.12
Heather A. Verity	4,869.43
Christy Huber	4,863.03
Bonnie Brannan	4,855.92
K.T. Marie Martin	4,820.59
Appolonia Nedeigbo	
Onwuanaegbo	4,805.59
Suanne P. Eaton	4,789.22
Elizabeth Medernach	4,761.54
Gail Bauer	4,761.44
Regan L. Danforth	4,734.58
Jacqueline N. Alford	4,716.65
Robin S. Barbour	4,704.90
Helen Amato	4,691.74
Palia A. Curry	4,675.18
Margaret Allison Reiser	4,664.54
Carmen Nunez	
de Valencia	4,659.65
Susan C. Ehnstrom	4,642.26
Kate Onyeker	4,623.00
Gina M. Gildone	4,619.17
Charlene N. Mason	4,617.05
Rebecca W. Cox	4,605.27
Lisa Blackmore	4,579.19
Karen Pappas	4,579.19
Cathy O. Calabro	4,570.53
Trish Digan	4,528.54

recognition

Mary Kay Angels

These Independent National Sales Directors, Independent Sales Directors and Independent Beauty Consultants achieved the highest commissions/bonuses or production or had the most new team members in their Seminar areas in January 2010.

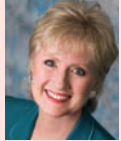
Top National Sales Directors — Commissions and Bonuses



Karen Piro
\$46,653
SAPPHIRE



Gloria Mayfield Banks
\$43,275
EMERALD



Darlene Berggren
\$29,120
PEARL



Barbara Sunden
\$71,053
DIAMOND



Carol Anton
\$46,560
RUBY

Top Unit — Estimated Retail Production

SAPPHIRE — Kim Cowdell, <i>T. Crayk Area</i>	\$70,470
EMERALD — Auri Hatheway, <i>D. Wiegandt Area</i>	\$63,813
PEARL — Kristin Myers, <i>G. McGuire Area</i>	\$90,634
DIAMOND — LaRonda Daigle, <i>Go Give Area</i>	\$92,494
RUBY — Krystal Downey-Shada, <i>Go Give Area</i>	\$84,166

Top Sales Director — Personal Sales

SAPPHIRE — Linda Perry, <i>Go Give Area</i>	\$13,243
EMERALD — Shirley Rice, <i>Go Give Area</i>	\$10,908
PEARL — Tammy S. Caswell, <i>B. Stimach Area</i>	\$8,410
DIAMOND — Ava Roberts, <i>Go Give Area</i>	\$15,577
RUBY — Juliet Goertzen, <i>P. Danforth Area</i>	\$22,023

Top Beauty Consultant — Personal Sales

SAPPHIRE — Jacqueline Chase, M. Silva Unit, <i>Go Give Area</i>	\$25,664
EMERALD — Helen Leiby, M. Bright Unit, <i>G. Mayfield Banks Area</i>	\$15,254
PEARL — Pamela Del Grande, D. Heckathorne Unit, <i>Go Give Area</i>	\$16,890
DIAMOND — Hau Nguyen, C. Searcy Unit, <i>A. M. Garrett-Roe Area</i>	\$15,708
RUBY — Laura Schlesing, P. White Unit, <i>L. Holliday Area</i>	\$10,631

Top Team Builder

SAPPHIRE — Sales Director Melissa Wilson, <i>Go Give Area</i>	12 New Team Members
EMERALD — Sales Director Renita Peele, <i>N. Privette-Jones Area</i>	16 New Team Members
PEARL — Patricia Parrish, S. Plunkett Unit, <i>K. Goff-Brummett Area</i>	12 New Team Members
DIAMOND — Sales Director Hilda Medina, <i>G. Reyes Area</i>	10 New Team Members
RUBY — Sales Director Inez Thayer, <i>Go Give Area</i>	16 New Team Members

Top Unit Builders

Independent Sales Directors with 20 or more new unit members for January 2010.

Sapphire

Tabitha A. Hallums..... 21 New Unit Members

Emerald

Renita Griswell Peele..... 25 New Unit Members

Pearl

Nedra Ruby White..... 22 New Unit Members

Diamond

Kristin Jenae Rogers..... 22 New Unit Members
Cecilia C. James..... 21 New Unit Members

Ruby

Sheryl K. Goins..... 20 New Unit Members
Inez M. Thayer..... 20 New Unit Members

Meet your NSDs

Be sure to visit the Mary Kay InTouch® Web site for inspiring success stories about Mary Kay Independent National Sales Directors. Click on the “**Meet Your NSDs**” link under the Heritage tab. You can search for NSD stories by name, city, state, Seminar or even former occupation. Why not share their stories with potential team members?

APPLAUSE® magazine is published in recognition of and as information for members of Mary Kay Inc.'s independent contractor sales organization, Independent National Sales Directors (“National Sales Directors”), Independent Sales Directors (“Sales Directors”) and Independent Beauty Consultants (“Consultants”) in the United States, Puerto Rico, U.S. Virgin Islands and Guam by Mary Kay Inc., Dallas, Texas ©2010 Mary Kay Inc. Member: Direct Selling Association; Cosmetics, Toiletry and Fragrance Association. *Affection, Applause, Beaut-e-News, Beauty Blotters, Belara, Bella Belara, Domain, Elige, Eyesicles, Go-Give, Heart to Heart, Indulge, Inspiring Beauty Through Caring, Journey, LearnMK, Lucentrix, Mary Kay, Mary Kay InTouch, Mary Kay Tribute, MK, MKConnections, MKeCards, MK Men, myBusiness, myCustomers, Nutribeads, Ovation, Pink Link, Power Hour, Proneal, Satin Hands, Satin Hands & Body, Satin Lips, Satin Smoothie, Smart Start, TimeWise, Tribute and Velocity* are registered trademarks; and *Enriching Women's Lives, Exotic Passionfruit, Mint Bliss, MK High Intensity, Simply Cotton, Sparkling Honeysuckle and Warm Amber* are trademarks of Mary Kay Inc., 16251 Dallas Parkway, P.O. Box 799045, Dallas, Texas 75379-9045, www.marykay.com.

YOUR INDEPENDENT CONTRACTOR STATUS: As an independent contractor, you are not an employee nor an agent of Mary Kay Inc. Throughout *Applause®* magazine, you will receive guidance, suggestions and ideas regarding your Mary Kay business, yet you have the freedom to choose your own hours and the business methods that work best for you. The Company retains no right of control over you, except those terms of your Independent Beauty Consultant, Independent Sales Director and/or Independent National Sales Director Agreement(s) with the Company. You, in turn, have no power or authority to incur any debt, obligation or liability, or to make any representation or contract on behalf of the Company.

step in to team-building

With the right tools and a little lesson in confidence, you might find yourself picking up a beautiful handbag at Seminar 2010!



Team-Building Brochure. This brochure includes what women want to know about the opportunity to start earning income right away. Consider sharing it with hostesses or sending it home with guests after a class or party. The **Team-Building Appointment Guide** is a great tool to use during the follow-up appointment and is included with the brochures sold on **Section 2 of the Consultant order form.**

Life Can Be Good Quiz. As seen in the team-building brochure and on the "Sell Mary Kay" section of Marykay.com. You can use this fun and easy quiz to help your potential team members learn about their personality traits and why the Mary Kay opportunity could be a perfect fit for them.

Steps to Success Career Path Brochure. This brochure shows the career apparel and how a Mary Kay business gives women unlimited opportunities for advancement through the career path. Available from **Section 2 of the Consultant order form.**

"Sell Mary Kay" Section on Marykay.com and Your Mary Kay® Personal Web Site. Here your potential team members can learn more about starting a Mary Kay business. It features the *Life Can Be Good* quiz and video profiles of Independent Sales Directors sharing their Mary Kay successes.

Team-Building CD. Consider sharing this CD to help potential team members make the decision to start a business. It features heartfelt success stories from top independent sales force members. Order online and from **Section 2 of the Consultant order form.**

Satellite Education Event – A Mary Kay Journey DVD. Now reduced to \$5 on the Consultant order form, this DVD features top Independent National Sales Directors and can help you share the Mary Kay experience with potential team members.

Find even more team-building tools on the Mary Kay InTouch® Web site under **Education>Discover How to Team-Build.** Plus, look for the new **Silver Wings Scholar ProgramSM** curriculum called **"Team-Building With Integrity"** featuring audio, video and interactive lessons that can help refine your team-building skills and boost your confidence.

Increase Your Confidence

"Team-building simply is transfer-



ring your belief in the Mary Kay opportunity to another woman," shares **Independent Executive Senior Sales Director Julie Danskin** of Woodbury, Minn. "Think of it in the same way as you

transfer your belief in the products to others." In Julie's experience, team-building becomes overwhelming when you don't believe in yourself, and you fear rejection. "Have a rock-solid belief in the Company and the opportunity – even if you haven't yet reached your ultimate business goals," she shares.

Julie's top team-building tips:

1. Use the four-point recruiting plan. (Go to Mary Kay InTouch® for details.)
2. Hold parties and facial at least 10 people per week.
3. Look for people who want something more; find a need and fill it.
4. Become a master at telling your personal success story and help relate it to your potential team member.
5. Graciously let go if someone is not interested and keep them as a loyal customer.
6. Keep practicing.

It's in the Bag!

Seminar 2010

Team-Building Challenge

March 1 – June 30, 2010

- A Fabulous Bag
- A Cool Ribbon
- A Rockin' Reception
- A Red-Hot Lunch
- A Trendy Clutch

Earn **all** of these rewards when you add five contest-qualified* new personal team members during the contest period. Go to the Mary Kay InTouch® Web site for complete qualification details and rewards. **You'll have team-building in the bag!**



*A qualified new personal team member is one whose initial order with the Company is \$600 or more in wholesale Section 1 products, and it is received and accepted by the Company in the same or following calendar month that her Independent Beauty Consultant Agreement is received and accepted by the Company.



Seminar 2010 PROJECT superStarSM

“I want you to aim for the moon and to remember that even if you miss, you will land among the beautiful stars.”

– Mary Kay Ash

We're gearing up in preparation of another *celebration to end all celebrations* just for YOU! It's THE Mary Kay celebration of the year: three days filled with excitement, education and recognition that we call Seminar! Imagine the thrill of receiving standing recognition for your accomplishments. Or, better yet, imagine walking across the Seminar stage looking fabulous and feeling great as you wave to the crowd of sister Independent Beauty

Consultants and Independent Sales Directors enthusiastically cheering and applauding for you! Join others who, like you, have captured the vision of what this business opportunity can be! Or maybe you're looking for the motivation and inspiration to help you stretch your belief that you can, YOU WILL reach just a bit higher! Find all this, and so much more, waiting for you when you join us at *Project SuperStarSM Seminar 2010!*



Seminar 2010 Classes

Exciting business-building classes await you at *Project SuperStar*SM Seminar 2010. It's a can't-miss opportunity to learn from top Independent National Sales Directors and Independent Sales Directors, and experience the camaraderie and "one-on-one" conversations with sister Beauty Consultants and Sales Directors that just may inspire your own personal "Aha" moments.

You may want to go to the Mary Kay InTouch[®] Web site and click on **Events>Special Events>Seminar 2010>Class Information** for a list of educational materials that you can review to help heighten your Seminar learning experience.

Day Zero

You won't want to miss the exciting line-up of *Extra Mile Classes* offered on Day 0. The first classes begin at 1 p.m., and the last classes end by 4 p.m. Plan to arrive in time to attend the exciting "and then some" education open to all independent sales force members. Stay tuned – more information to come!

Day One

Spouse Class 2:30 – 4 p.m.

Spouses who enjoyed the open discussion and interactive format of last year's class will love this one! We've added another 30 minutes for exchanging ideas and listening to experienced spouses.

Dates:

- July 21 – 24 Sapphire
- July 25 – 28 Emerald
- July 28 – 31 Pearl
- Aug. 1 – 4 Diamond
- Aug. 4 – 7 Ruby

Location:

Dallas Convention Center, Dallas, Texas

Product Giveaway

When you attend *Project SuperStar*SM Seminar 2010, you'll receive a product giveaway that allows you to be among the first to try new products!



Just a Click Away

You'll find everything you need to know about *Project SuperStar*SM Seminar 2010 on the Mary Kay InTouch[®] Web site, including details about the following topics and so much more:

- Recognition
- Registraton information and forms
- Schedule At-a-Glance
- Travel assistance
- Details about special functions and events
- Class descriptions
- Tours and activities for spouses
- Contest rules
- Map of the Dallas Convention Center
- Online sales booth early ordering

Priority Awards Seminar Seating Registration

April 5 – 30, 2010:

- Mary Kay InTouch® Web site: Click on the *Project SuperStar*™ Seminar 2010 icon.
- Mail: Special Events Registration, Mary Kay Inc., P.O. Box 799045, Dallas, TX 75379-9045
- E-mail notification will be sent and registration forms will be mailed upon request to qualifiers who do not have an e-mail address.
- Preorder Seminar souvenir items on Mary Kay InTouch® and receive a 15 percent discount.

Registration Dates: Awards Seminar registration opens to all independent sales force members on May 1, 2010, on a first-come, first-served basis. Deadline to register is June 30, 2010. *Note: Hall A will not be available at any Seminar this year.*

Registration Fee: \$175; must be received in Special Events by 5 p.m. Central time on June 30; \$200 on-site, space permitting (except for new Independent Beauty Consultants whose Independent Beauty Consultant Agreements are accepted by the Company in July and Aug. 2010).



Order Seminar Souvenirs Early

Looking for a fun Seminar memento? Priority Awards Seminar Registration qualifiers who register for Awards Seminar by April 30 have the opportunity to preview and preorder irresistible Seminar souvenirs from April 5 – 30 on the Mary Kay InTouch® Web site. They also will receive a 15 percent discount on their entire order. Orders will be shipped in July.

Day Two

Career Development Classes

9 a.m. – 3:15 p.m.

Independent Beauty Consultants and Independent Senior Beauty Consultants with one to two years' experience:

9 – 9:30 a.m. Principles and Excellence
 9:30 – 10:15 a.m. Following in Her Footsteps
 10:30 – 11:15 a.m. Booking Is the Lifeline of Your Business
 11:15 – Noon Polishing Your Performance
 1:45 – 2:30 p.m. Retain to Gain Customers
 2:30 – 3:15 p.m. Understanding the Meaning of “No”

Independent Beauty Consultants and Independent Senior Beauty Consultants with three to four years' experience:

9 – 9:45 a.m. Booking Is the Lifeline of Your Business
 10 – 10:45 a.m. Polishing Your Performance
 11 – 11:45 a.m. Retain to Gain Customers
 1:45 – 2:30 p.m. A Dream Worth Sharing
 2:30 – 3:15 p.m. Understanding the Meaning of “No”

Independent Beauty Consultants and Independent Senior Beauty Consultants with five to eight years' experience:

9 – 9:45 a.m. Building Confidence in Your Business
 10 – 10:45 a.m. Unlocking Your Sales Potential
 11 – 11:45 a.m. Courage to Build a Team
 1:45 – 2:30 p.m. Putting Wings on Your Dreams
 2:30 – 3:15 p.m. It's the Climb!

Independent Beauty Consultants and Independent Senior Beauty Consultants with nine-plus years' experience:

9 – 9:45 a.m. Building Confidence in Your Business
 10 – 10:45 a.m. Unlocking Your Sales Potential
 11 – 11:45 a.m. Courage to Build a Team
 1:45 – 2:30 p.m. Expanding Your Circle of Influence
 2:30 – 3:15 p.m. Getting Off the Sidelines and “Into the Game”!



Star Team Builders and Team Leaders:

9 – 9:45 a.m. Leadership Is Action, Not Position
 10 – 10:45 a.m. Selling 201
 11 – 11:45 a.m. The Greater Purpose
 1:45 – 2:30 p.m. Moving Past Red!
 2:30 – 3:15 p.m. Face to Face With Your Success

Future Independent Sales Directors and Independent Sales Directors-in-Qualification:

9 – 9:45 a.m. Leadership Is Action, Not Position
 10 – 10:45 a.m. Selling 201
 11 – 11:45 a.m. U-N-I-T = You and I Together!
 1:45 – 2:30 p.m. What an Honor!
 2:30 – 3:15 p.m. Keeping Your Eyes on the Prize

New Independent Sales Directors:

9 – 9:45 a.m. It's My Turn!

Independent Sales Directors:

9 – 9:45 a.m. A Plan Makes Premier (for those with Premier Club as a goal)
 Duplicating Your Success (for those who have earned the use of a Premier car or Cadillac)

Independent Senior Sales Directors and Future Executive Senior Sales Directors:

9 – 9:45 a.m. Called to a Higher Standard

Independent Executive Senior Sales Directors and Elite Executive Senior Sales Directors:

9 – 10:45 a.m. The Executive Boardroom – The Legacy Continues With You
 11 – 11:45 a.m. (Choose from classes listed below.)

Class options for all new Independent Sales Directors through Future Executive Senior Sales Directors:

- 10 – 10:45 a.m.
 11 – 11:45 a.m.
- Building People, Building Leaders
 - I Had My Best Year Ever; Let Me Show You How!
 - Million \$ Vision
 - Expect a Miracle!

Be There!



Independent Sales Director
Ashley Sanchez
of Roswell, Ga.

(Editor's note: We received this heartfelt e-mail, excerpted below, shortly after Seminar 2009.

It truly touched our hearts, and we know it will touch yours too. And inspired by what she learned at Seminar and the desire to help other women, Ashley became an Independent Sales Director Jan. 1, 2010.)

I just attended Seminar (in 2009) for the first time. What everyone had been telling me about Seminar was right! It was an absolutely amazing experience! I started my Mary Kay business last fall, which was about two months after my son died. It was definitely the darkest and lowest point in my life. My heart was broken in a way that I thought would kill me. I knew I needed to work again. I didn't want my husband to have any added pressure to provide for both of us in his grief. I knew I couldn't go back to my career in counseling because I felt I had nothing to give.

One day I said a prayer that I would find something that I was capable of doing. I had no idea what it would be, but I prayed and trusted that something would become clear. My husband came home around six hours later with a pink business card. He told me he met a woman (Independent Future Executive Senior Sales Director Karen Irwin of Ballwin, Mo.) with a pink Cadillac in the parking lot and told her how much his wife would love a car like hers. The card said that she had offered to meet me for coffee and talk about the Mary Kay opportunity, since I would be looking for something new once we moved from St. Louis to near Atlanta. I knew I needed to call her. I knew it wasn't just a coincidence that my husband had met Karen and that she offered to help me, not even knowing who I was.

I called Karen and met with her the next day. She explained the business opportunity, and I signed my Independent Beauty Consultant Agreement that night. I went through New Consultant Orientation and attended two unit meetings the last week we lived in St. Louis. After moving to Atlanta, I unpacked and began working my business with all my friends and family to start. I've built a customer base of 150, so far, and have met so many wonderful women. I've definitely fallen in love with this Company. It's been the hardest year of my life, but in some ways, it also has been a great year.

I got to walk across the Seminar stage and pick up my first diamond ring for being in the Beauty Consultant Queen's Court of Personal Sales! I cannot put into words how grateful I am to have Mary Kay in my life. During the candlelight close at the end of Seminar, I just stood there with tears streaming down my face, knowing how lucky I am to have this opportunity. I can honestly say that Mary Kay has enriched my life.



Independent Elite Executive National Sales Director
Barbara Sunden

At Seminar, we are seated by our accomplishments (at general sessions). At one of the early Seminars, I remember being up in the nosebleed section of the Dallas Convention Center and listening to Mary Kay speak. She spoke so much on the value of each person. She always told us we each had a giant within us waiting to come out. I couldn't even see the stage, but I leaned forward and thought, "It's really up to me to take what she's saying and make a difference in my own life." The next year was the year I broke out and made things happen.



Seminar 2010 Special Functions You Won't Want to Miss

Ask any Independent Beauty Consultant or Independent Sales Director who has qualified to attend a Seminar reception or luncheon, and they'll tell you that there's nothing like dining "Mary Kay style"! Here's just a *taste* of some of the special recognition you can earn at Seminar 2010:

It's in the Bag! Seminar 2010 Celebrations

You can be an honored guest at the *It's in the Bag!* Reception and Luncheon when you meet the qualifications for the *It's in the Bag!* Team-Building Challenge. You also can pick up your handbag and matching wallet on-site at Seminar when you qualify. Go for **five** qualified* new personal team members and earn it all! Look for contest details on the Mary Kay InTouch® Web site.

All-Star Luncheon

Independent Beauty Consultants and Independent Sales Directors who achieve Star Consultant status all four quarters from June 16, 2009, through June 15, 2010, with at least 14,400 or more in total year-end contest credit will be invited to this special luncheon. Independent Sales Directors who achieve year-long Star Sales Director status and have at least 60 unit Star Consultants from June 16, 2009, through June 15, 2010, also will receive an invitation.

For complete information on all Seminar special functions and recognition, please log on to the Mary Kay InTouch® Web site.

"Seminar is the ultimate expression of a very simple concept – praise people to success. Let people know that you appreciate them and their performance, and they'll respond by doing even better. Applause and the recognition it represents are among the world's most powerful forces."

– Mary Kay Ash

Go-Give® Award

Congratulations to the winners for May 2010.

The Go-Give® Award is given in memory of Independent National Sales Director **Sue Z. Vickers** to recognize Independent Sales Directors who best exemplify the **Golden Rule**, helping others **unselfishly** and **supporting** adoptees as much as unit members.

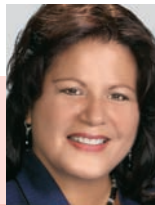
If you know an Independent Sales Director who has displayed the Go-Give® spirit, why not nominate her for the monthly Go-Give® Award? The Go-Give®

Award nomination form is available on the Mary Kay InTouch® Web site under "Recognition."



Cheri Taylor

Sapphire
Independent Executive Senior Sales Director
Began Mary Kay
July 1993
Sales Director Debut
July 1997
Offspring five first-line; two second-line
National Sales Director
Go Give Area
Honors Cadillac qualifier; Star Consultant; five-times Circle of Achievement; five-times Circle of Excellence; estimated highest monthly unit retail: \$94,806
Personal Lives in Missoula, Mont.
Favorite Quote "You cannot teach what you do not know; you cannot lead where you do not go!"
Independent Senior Sales Director Candy Johnston of Nashville, Tenn., says, "Cheri is a leader who has so much patience, love and insight! She relates to people where they are but shows them they are truly so much more."



Vanessa Ayala-Baker

Emerald
Independent Sales Director
Began Mary Kay
February 2003
Sales Director Debut
November 2004
National Sales Director
Kerry Buskirk
Honors Premier Club qualifier; Star Consultant; Sales Director Queen's Court of Personal Sales; Honors Society; gold medal winner; estimated highest monthly unit retail: \$36,569
Personal Lives in Valley Center, Kan. Husband, Mark; son, Aaron; daughters: Sara, Samantha
Favorite Quote "The pain of discipline is easier than the pain of regret."
Independent Beauty Consultant Carol Brent of Salina, Kan., says, "Vanessa has such a giving heart! When her friend Cindy had cancer, Vanessa accompanied her on trips to the Houston Cancer Center many times during the two years before her death."



Amy Stokes

Pearl
Independent Future Executive Senior Sales Director
Began Mary Kay
March 1994
Sales Director Debut
June 1998
Offspring three first-line; one second-line
National Sales Director
Julie Krebsbach
Honors Cadillac qualifier; Star Consultant; eight-times Circle of Achievement; gold medal winner; estimated highest monthly unit retail: \$69,831
Personal Lives in Knoxville, Tenn. Husband, Chris
Favorite Quote "You can make money or you can make excuses, but you can't do both!"
Independent Sales Director Shari Kirschner of Chesterton, Ind., says, "When my father passed away, Amy drove four hours from Knoxville to Atlanta to spend visitation time with our family. This kindness will never be forgotten by our family."



Marcia Sadowski

Diamond
Independent Senior Sales Director
Began Mary Kay
September 1977
Sales Director Debut
December 1979
Offspring two first-line; seven second-line
National Sales Director
Go Give Area
Honors Premier Club qualifier; Circle of Honor; eight-times Sales Director Queen's Court of Personal Sales; four-times Circle of Achievement; gold medal winner; estimated highest monthly unit retail: \$48,554
Personal Lives in Woodbury, Minn. Husband, Pete; son, Alex
Favorite Quote "Be kinder than necessary for everyone you meet is fighting some kind of a battle."
Independent Executive Senior Sales Director Gail Menefee of Minnetonka, Minn., says, "During my cancer and chemotherapy journey, Marcia called or e-mailed me almost daily, posted messages on the CaringBridge site for me and started a fund for medical help."



Meg Springer

Ruby
Independent Senior Sales Director
Began Mary Kay
February 1993
Sales Director Debut
July 2000
Offspring one first-line
National Sales Director
Go Give Area
Honors Cadillac qualifier; Star Consultant; three-times Circle of Achievement; gold medal winner; estimated highest monthly unit retail: \$68,143
Personal Lives in Bozeman, Mont. Husband, Mike; sons: Zach, Cole; daughter, Kailey
Favorite Quote "You never know when one act or one word of encouragement can change a life forever." – Zig Ziglar
Independent Sales Director Cheryl Dechenne-Sheedy of Bozeman, Mont., says, "Meg treated my personal unit as her own during my health issues, and my unit is thriving as a result of her selfless effort."



Hosting a Mary Kay® party with me is an effortless way to have fun and feel fabulous doing it.

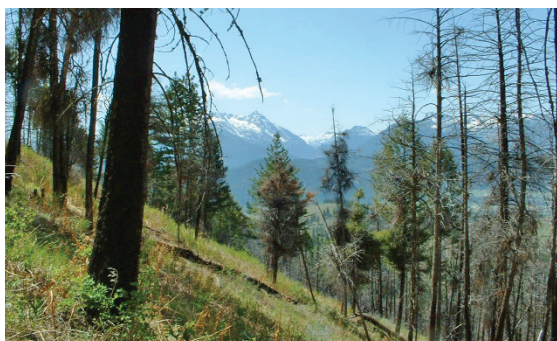
When you host a party with me, your Independent Beauty Consultant, you are supporting a company that does good!

One of the ways Mary Kay makes a difference is by caring for the environment through its Pink Doing Green® initiative.

Knowing our actions today will affect the quality of life for future generations, Mary Kay Inc. seeks to **improve our environmental performance** and **find ways to be even more sustainable and green.**

Mary Kay Inc.'s efforts include:

- Planting 200,000 trees in the Bitterroot National Forest in Idaho and Montana under the guidance of the U.S. Forest Service.
- Using packing materials made from corn and potato starch, two renewable resources, in shipping boxes – instead of using Styrofoam.
- Looking for ways to recycle, find pollution solutions, conserve water, be energy efficient and “leave no trace” on a daily basis.



- Recycling 323,089 outdated Mary Kay® compacts in an environmentally responsible way.
- Sending all returned products that contain alcohol and any alcohol waste products to a resource recovery facility.

It's how
pink finds green solutions.

It's simply
the right thing to do.

Learn more at www.marykay.com.



pink doing green®

MARY KAY®

Mary Kay Inc.
P.O. Box 799045
Dallas, TX 75379-9045

PRSR STD
U.S. POSTAGE PAID
MARY KAY INC.

New! Limited-Edition Mother's Day Gift Sets

Available April 1

\$55
per set

Each set includes a scented body lotion, scented shower gel and eau de parfum spray with a coordinating bag. A super value for any mom! Available while supplies last.

*Give Mom a
Gift From the Heart.*



Bella Belara®



Belara®

\$55
per set



Journey®

\$55
per set



**Always
a Favorite**

Fragrance-Free Satin
Hands®
Pampering
Set,

\$34
per set

Product prices are suggested retail.

Go to Mary Kay InTouch® to find a full-sized, reproducible version of this page to share with your customers.

©2010 Mary Kay Inc.

PRINTED IN U.S.A.